

^
P O R T F O L I O
SPORT



C R E A T I N G A B E T T E R R E A L I T Y

ATI | Project

WE ENVISION FUTURE
PLACES, SPACES AND
CONTEXTS, PUTTING PEOPLE
AND THE ENVIRONMENT
AT THE CENTRE OF
ARCHITECTURE AND
DESIGN.



▲ SPORT PORTFOLIO

Table of contents

Profile pg. 5

Projects

- Franchi Stadium and Campo di Marte pg. 6
- Stadium Arena pg. 10
- Rugby Arena pg. 12
- “A. Trevisani” Gym pg. 14
- “Matteotti” Gym pg. 16
- Multifunctional Sports Hall pg. 18

IN THE SPORTS
FIELD, WE CREATE
ECO-SUSTAINABLE
AND FUNCTIONAL
PROJECTS, DESIGNED
TO CREATE THE
PERFECT EXPERIENCE
FOR SPORTS AND
SPECTATORS.



PISA
MILAN
BELGRADE
ODENSE
COPENHAGEN
PARIS
GENEVA
TALLINN

▲ PROFILE

Creating a better reality

Exploring new ways to enrich the lives of the people who live in our buildings.

ATI Project is an international company specialized in **integrated design** in the field of architecture and engineering, committed to the development of sustainable buildings with reduced environmental impact.

The initial outline of the structure is the same that still drives its growth today: a young, visionary, technological studio that natively uses the **BIM methodology** to promote multidisciplinary, as well as innovation and sustainability.

The studio was established in 2011 by **Branko Zrnica and Luca Serri**, founders dedicated to research in the field of bioclimatic architecture and renewable energy. Within a decade, the team has grown **from 2 to 300 collaborators**, with an average age of 32 years.

The complexity and number of projects reflect the international success of the office, which today, in addition to its headquarters in **Pisa**, has offices in **Milan, Belgrade, Odense, Paris, Copenhagen, Geneva** and **Tallinn**.



11

YEARS OF CONSTANT GROWTH



20 Mil.

TURNOVER IN EUROS



8

INTERNATIONAL OFFICES



1+ Million of m²

OF COMPLETED OR ONGOING PROJECTS



Main access

The Franchi Stadium enters the contemporary world with a solution that integrates and enhances its historical dimension. A far-reaching intervention that also involves Campo di Marte according to a planning oriented towards the territory and sustainability.

SPORT, URBAN

Franchi Stadium and Campo di Marte

Architecture and sport become a unique synthesis of the spectator's experience

A new modern, sustainable and safe stadium, compliant with FIGC and UEFA requirements with commercial spaces accessible 24/7.

The design is generated from the enhancement of the incredible existing structure of Pier Luigi Nervi, embedded in an Urban Sport Park.

An overall intervention aimed at the improvement of quality of life within the neighborhood and in the entire city, revitalized by a brand-new identity and

a modern permeability between public and private spaces.

These have been the focus points of our proposal for the new Stadio Franchi and the masterplan for Campo di Marte northern area.

Location:
Florence, Italy

Typology:
Requalification

Year:
2021

Stato:
Design completed

Dimensions:
Stadium: 40,000 spectators
Masterplan: 25 ha

Budget:
€ 170 mln

Activities:
AR design



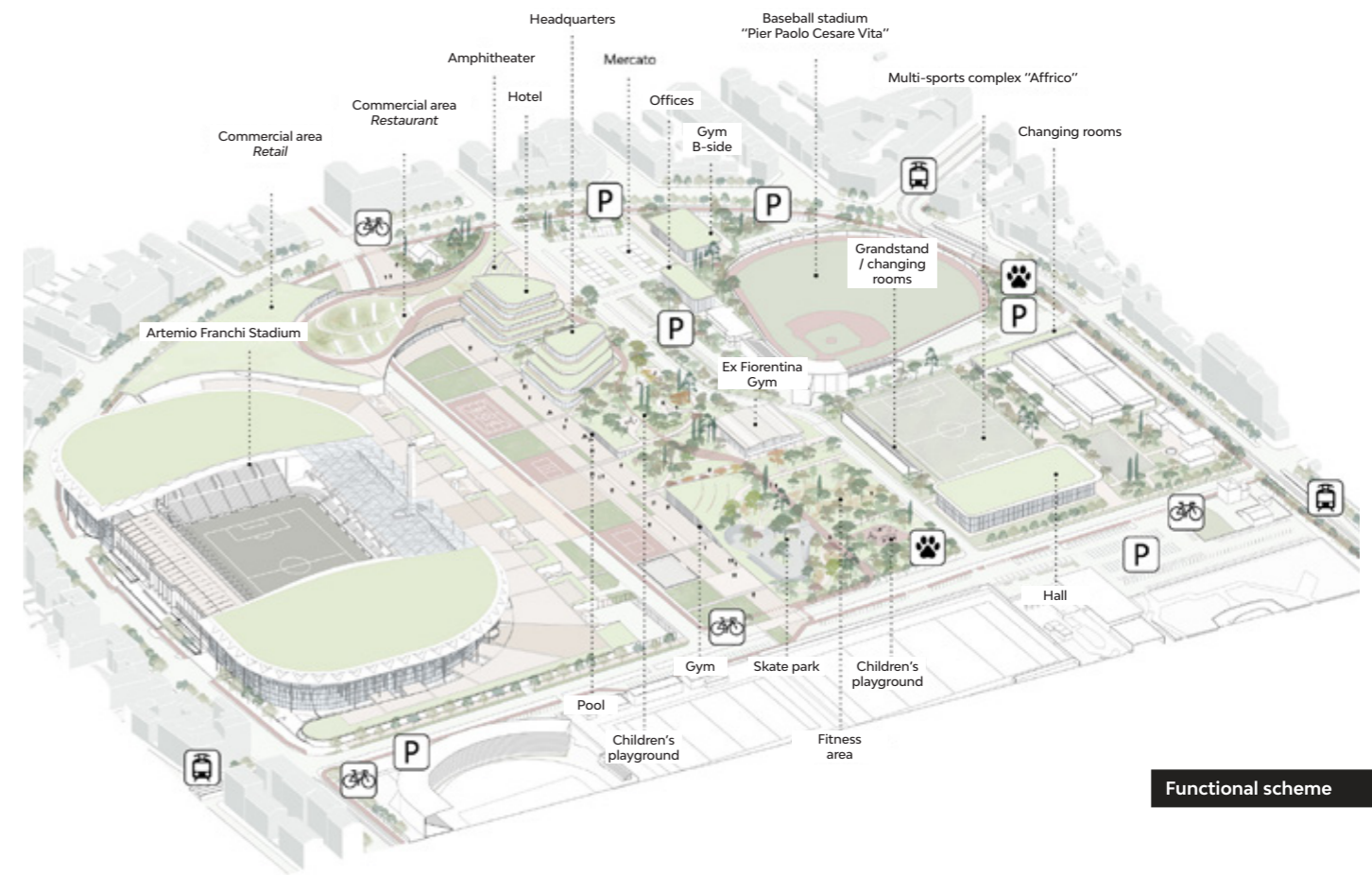
Inside the stadium



Promenade



Overview



Functional scheme



Project overview



Stadium interior

The sports character of the city interpreted as an urban revitalization and a model for development.

SPORT

Stadium Arena

Sport, territory, sustainability. The new Pisa stadium

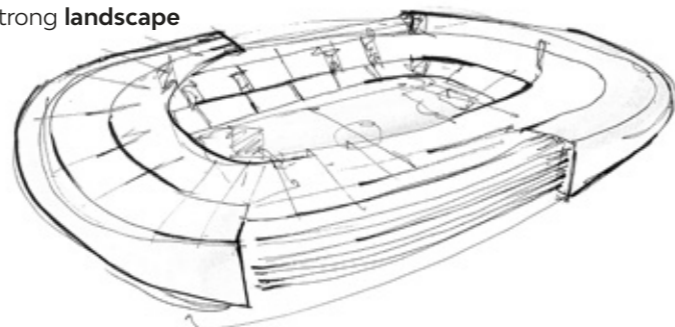
The aim of the project is to respond to the logistical-infrastructural needs that characterize the team, the fans and more generally, the entire city.

Two **sports courts**, a **hotel resort** for athletes, a **shopping area** and numerous **parking lots** make up the intervention program.

Large **green spaces** integrate the design into the surrounding context, allowing a strong **landscape**

continuity. The stadium is the fulcrum: a **double membrane** (blue in the north and red in the south) embraces the spectator tribunes.

The shape of the building is **optimized from a bioclimatic point of view**, a symbol of sustainability and community at the same time.



Location:
Pisa, Italy

Typology:
New construction

Year:
2010

Status:
Project completed

Dimensions:
20.000 Spectators

Budget:
€ 60 mln

Activities:
AR - ST - MEP design



Main entrance



Spectators area



The intervention welcomes a rugby field, homologable for the C series, which combines technological parameters to expand the game experience.

SPORT

Rugby Arena

The heart of sport, a space for competition and team spirit

The project for the new rugby field for the CUS in Pisa completes the University Sports Centre in Via del Brennero.

A great deal of attention was paid to the technological design. Four light-towers brighten the game field.

The highly performing court surface is UV ray resistant and frost resistant.

The double coloured shades of the fibres give back a very resembling appearance to that of a real grass surface, improving the experience of playing.

Location:
Pisa, Italy

Typology:
New construction

Year:
2013

Status:
Completed

Dimensions:
110 X 70 m

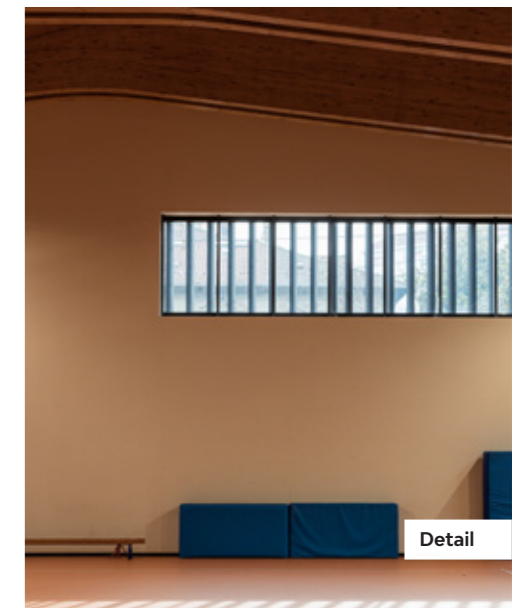
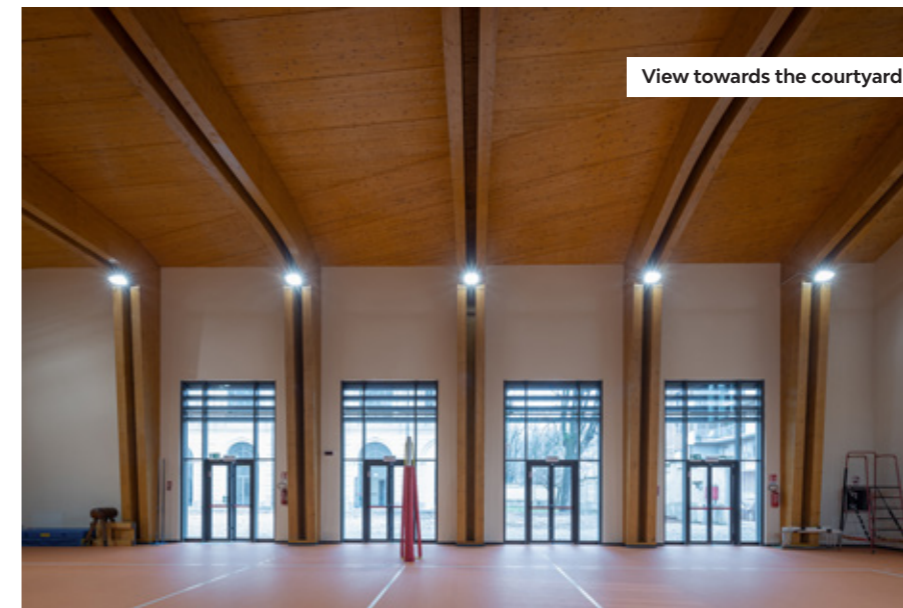
Budget:
€ 565.000

Client:
CUS Pisa

Activities:
AR - ST - MEP design



Panoramic view



The design proposal for the gym in Casale Monferrato is an example of eco-sustainability and eco-compatibility in a historical context.

SPORT

"A. Trevigi" Gym

Crossed dialogues. Between historical building and energy efficiency

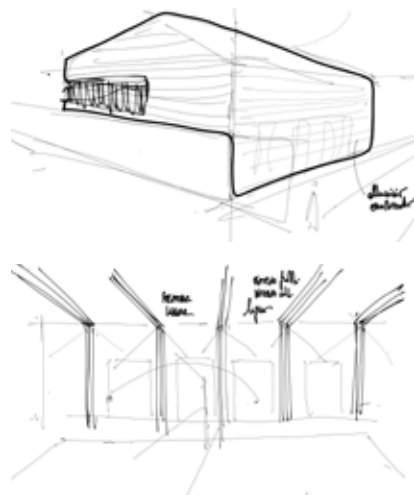
The project for the extension of the **Cova Adaglio Palace** follows a functional approach, where the design criteria derive from the **didactic and organisational requirements** of the school.

It stands in continuity to the existing historical building and is characterised by contemporary architectural and technological features.

The volume hosting the classrooms is built in **X-lam panels** and is equipped

with FV panels on the roofing that are needed to satisfy energy consumption needs.

The **gymnasium** is constructed in a wooden framework, completed with a metallic ventilated façade that provides high bioclimatic performance.



Location:
Casale Monferrato, Italy

Typology:
New construction (extension)

Year:
2019

Status:
Completed

Dimensions:
1.035 sqm

Budget:
€ 1.5 mln

Client:
Municipality of Casale Monferrato

Activities:
AR - ST - MEP design





Interiors - Sports court

The architectural organism constitutes the new fulcrum around which the various functions revolve.

A SPORT

"Matteotti" Gym

Sport and education. A welcoming and functional gym

The new gym of the Matteotti Institute in Pisa is a project that pursues balance, harmony with the context and order in its layout.

The **multifunctional court**, designed in compliance with CONI standards, obtains a central position in the functional layout: a unique and flexible space, featuring an exposed wooden structure that innervates the space and gives back a warm and welcoming ambiance for athletes and spectators.

The **facade** facing the institute is outlined by a linear opening that develops along the entire length of the elevation, creating a dynamic combination of light and shadows that characterizes the interior space.

The simplicity of the volumes is reinterpreted in the design of the open areas, in which **nature** is the subject and frame of the sports experience.

Location:
Pisa, Italy

Typology:
New construction

Year:
2020

Status:
Under construction

Dimensions:
2.000 sqm

Budget:
€ 3 mln

Client:
Province of Pisa

Activities:
AR - ST - MEP design

Collaborators:
Studio Masiello strutture,
Eng. Stefano Liberatori



Relation with "Matteotti" Institute



Main access



Secondary entrance

From a gymnasium to a sports hall open to the community, a flexible and modern place.

SPORT

Multifunctional Sports Hall

Synthetic lines for functional and adaptable interiors

The project involves **replacing the current school gymnasium** with a modern and functional **sports hall**, which can be used both by the adjacent school and for training sessions and matches of local sports clubs.

The new hall was designed according to the current CONI regulations and will be able to accommodate up to **400 spectators**.

For better management of the facility, **a movable partition sheet** allows the playing area to be divided into two volleyball courts, so that **several classes or teams can be accommodated at the same time** during training.

The **public area** is equipped with a

refreshment area from which one can also access a large outdoor solarium with a view of the playing field through large windows that allow to follow the sporting activities also from outside

The envelope is characterised by a succession of opaque and transparent portions of regular shapes, for a **simple but recognisable language**.

Location:
Nembro, Italy

Typology:
New construction

Year:
2020 - 2021

Status:
Design completed

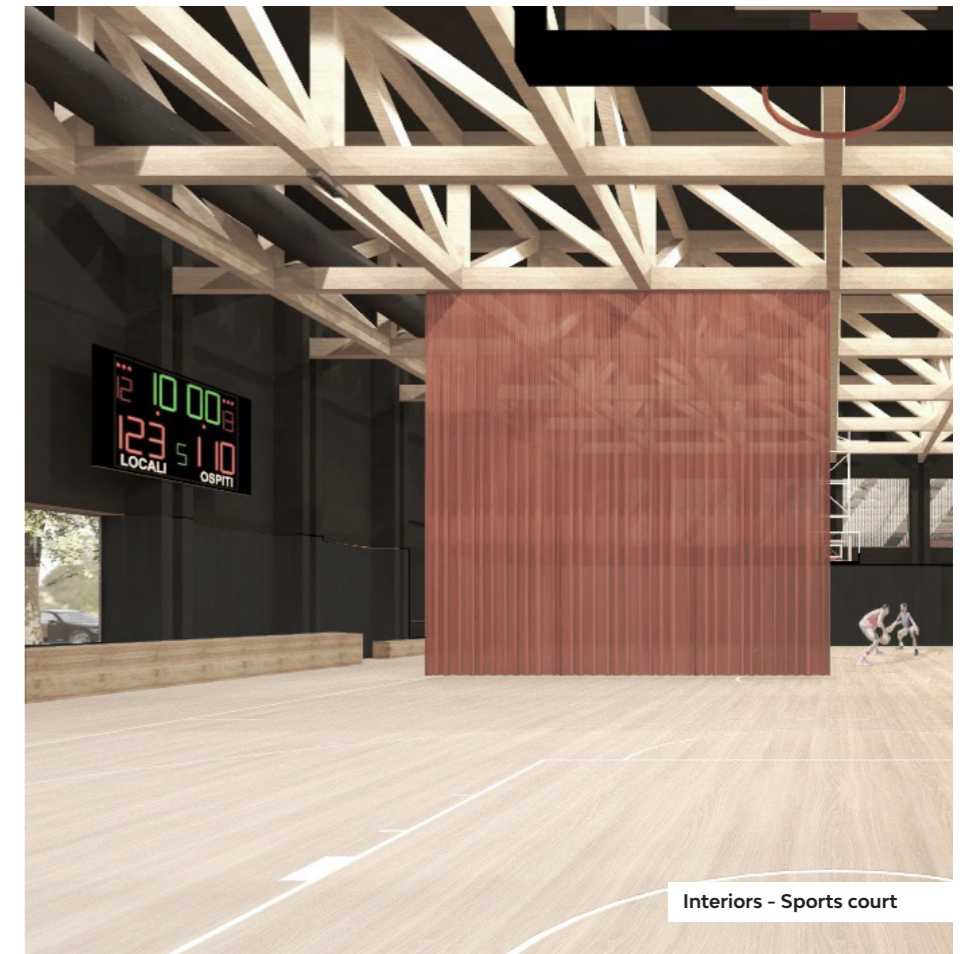
Dimensions:
2.000 sqm

Budget:
€ 2 mln

Client:
Municipality of Nembro

Activities:
AR - ST - MEP design

Collaborators:
Didonè Comacchio Architects



Interiors - Sports court

ATI | Project

CREATING A BETTER REALITY

PISA
MILAN
BELGRADE
ODENSE
COPENHAGEN
PARIS
GENEVA
TALLINN