

^  
P O R T F O L I O  
**SPORT**



C R E A T I N G   A   B E T T E R   R E A L I T Y

**ATI** | Project



WE ENVISION FUTURE  
PLACES, SPACES AND  
CONTEXTS, PUTTING PEOPLE  
AND THE ENVIRONMENT  
AT THE CENTRE OF  
ARCHITECTURE AND  
DESIGN.



Table of contents

Profile ..... pg. 5

Projects

Franchi Stadium and Campo di Marte..... pg. 6

Stadium Arena ..... pg. 10

Rugby Arena ..... pg. 12

“A. Trevigi” Gym ..... pg. 14

“Matteotti” Gym ..... pg. 16

Multifunctional Sports Hall..... pg. 18

Perignano Sports Center..... pg. 20



IN THE SPORTS  
FIELD, WE CREATE  
ECO-SUSTAINABLE  
AND FUNCTIONAL  
PROJECTS, DESIGNED  
TO CREATE THE  
PERFECT EXPERIENCE  
FOR SPORTS AND  
SPECTATORS.

PISA  
MILAN  
BELGRADE  
ODENSE  
COPENHAGEN  
PARIS  
GENEVA  
TALLINN

## ▲ PROFILE

### Creating a better reality

Exploring new ways to enrich the lives of the people who live in our buildings.

**ATI Project** is an international company specialized in **integrated design** in the field of architecture and engineering, committed to the development of sustainable buildings with reduced environmental impact.

The studio was established in 2011 by **Branko Zrnic and Luca Serri**, founders dedicated to research in the field of bioclimatic architecture and renewable energy. In twelve years, the **team** has grown from **2 to 350 collaborators**, with an average age of 32.

The initial outline of the structure is the same that still drives its growth today: a young, visionary, technological studio that natively uses the **BIM methodology** to promote multidisciplinary, as well as innovation and sustainability.

The complexity and number of projects reflect the international success of the office, which today, in addition to its headquarters in **Pisa**, has offices in **Milan, Belgrade, Odense, Paris, Copenhagen, Geneva** and **Tallinn**.



12

YEARS OF CONSTANT  
GROWTH



21,5 Mln

TURNOVER  
IN EUROS



8

INTERNATIONAL  
OFFICES



1+ Million of m<sup>2</sup>

OF COMPLETED  
OR ONGOING  
PROJECTS





The Franchi Stadium enters the contemporary world with a solution that integrates and enhances its historical dimension. A far-reaching intervention that also involves Campo di Marte according to a planning oriented towards the territory and sustainability.

SPORT, URBAN

## Franchi Stadium and Campo di Marte

**Architecture and sport become a unique synthesis of the spectator's experience**

A new modern, sustainable and safe stadium, compliant with FIGC and UEFA requirements with commercial spaces accessible 24/7.

The design is generated from the enhancement of the incredible existing structure of Pier Luigi Nervi, embedded in an Urban Sport Park.

An overall intervention aimed at the improvement of quality of life within the neighborhood and in the entire city, revitalized by a brand-new identity and

a modern permeability between public and private spaces.

These have been the focus points of our proposal for the new Stadio Franchi and the masterplan for Campo di Marte northern area.

**Location:**  
Florence, Italy

**Typology:**  
Requalification

**Year:**  
2021

**Stato:**  
Design completed

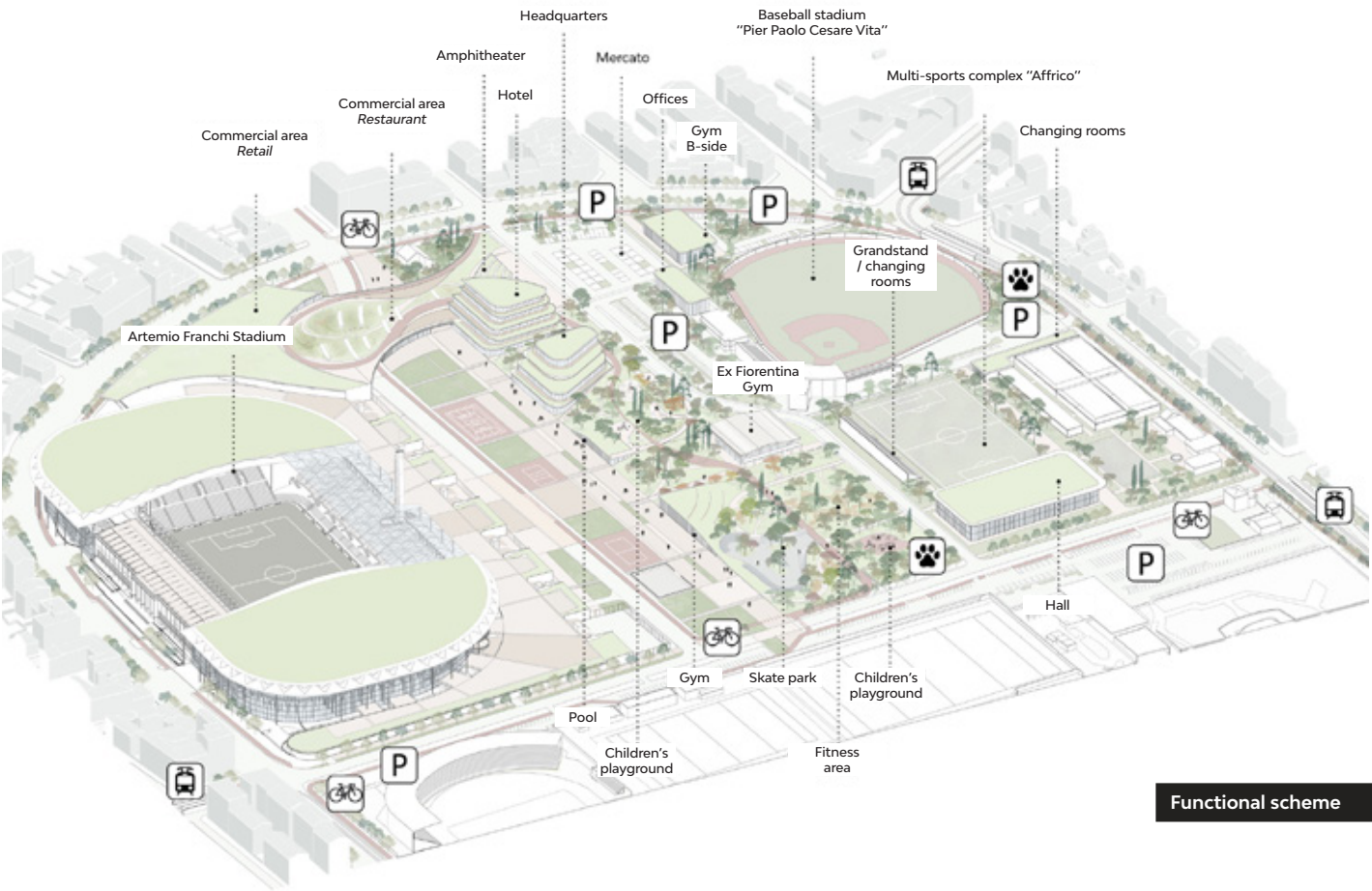
**Dimensions:**  
Stadium: 40,000 spectators  
Masterplan: 25 ha

**Budget:**  
€ 170 mln

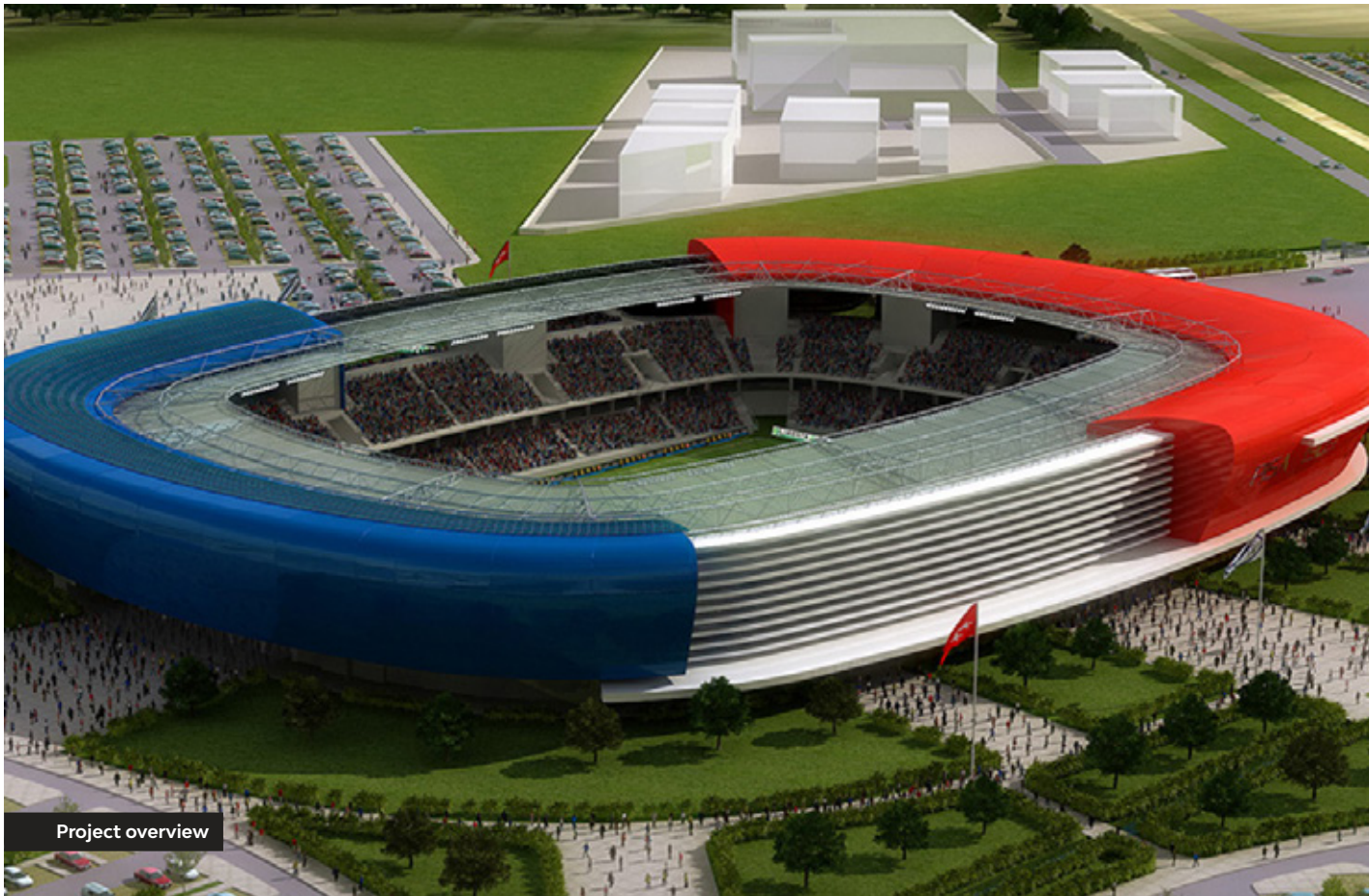
**Activities:**  
AR design











The sports character of the city interpreted as an urban revitalization and a model for development.

SPORT

# Stadium Arena

## Sport, territory, sustainability. The new Pisa stadium

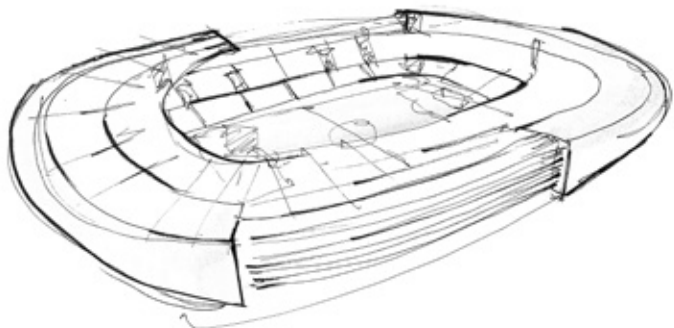
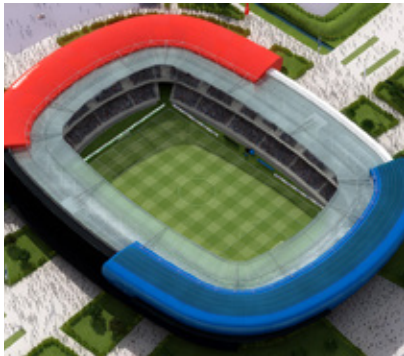
The aim of the project is to respond to the logistical-infrastructure needs that characterize the team, the fans and more generally, the entire city.

Two **sports courts**, a **hotel resort** for athletes, a **shopping area** and numerous **parking lots** make up the intervention program.

Large **green spaces** integrate the design into the surrounding context, allowing a strong **landscape**

**continuity.** The stadium is the fulcrum: a **double membrane** (blue in the north and red in the south) embraces the spectator tribunes.

The shape of the building is **optimized from a bioclimatic point of view**, a symbol of sustainability and community at the same time.



**Location:**  
Pisa, Italy

**Typology:**  
New construction

**Year:**  
2010

**Status:**  
Project completed

**Dimensions:**  
20.000 Spectators

**Budget:**  
€ 60 mln

**Activities:**  
AR – ST – MEP design







Overview

The intervention welcomes a rugby field, homologable for the C series, which combines technological parameters to expand the game experience.



SPORT

# Rugby Arena

## The heart of sport, a space for competition and team spirit

The project for the new rugby field for the CUS in Pisa completes the University Sports Centre in Via del Brennero. A great deal of attention was paid to the technological design. Four light-towers brighten the game field. The highly performing court surface is UV ray resistant and frost resistant.

The double coloured shades of the fibres give back a very resembling appearance to that of a real grass surface, improving the experience of playing.

- Location:** Pisa, Italy
- Typology:** New construction
- Year:** 2013
- Status:** Completed
- Dimensions:** 110 X 70 m
- Budget:** € 565.000
- Client:** CUS Pisa
- Activities:** AR - ST - MEP design

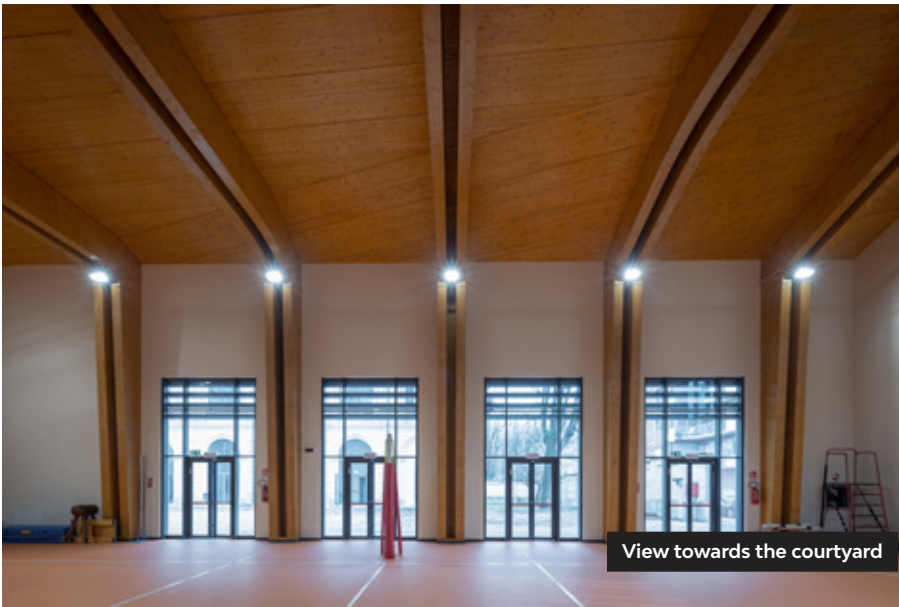


Panoramic view

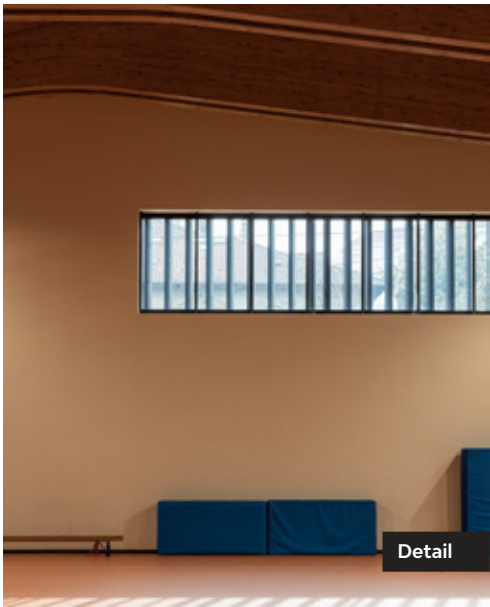




Sports court



View towards the courtyard



Detail

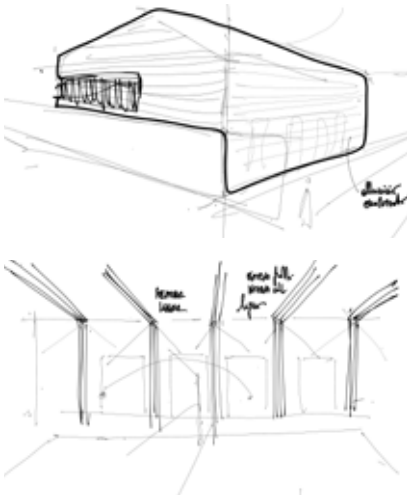


Street view



Entrance

The design proposal for the gym in Casale Monferrato is an example of eco-sustainability and eco-compatibility in a historical context.



SPORT

# "A. Trevigi" Gym

**Crossed dialogues.**  
**Between historical building and energy efficiency**

The project for the extension of the **Cova Adaglio Palace** follows a functional approach, where the design criteria derive from the **didactic and organisational requirements** of the school.

It stands in continuity to the existing historical building and is characterised by contemporary architectural and technological features.

The volume hosting the classrooms is built in **X-lam panels** and is equipped

with FV panels on the roofing that are needed to satisfy energy consumption needs.

The **gymnasium** is constructed in a wooden framework, completed with a metallic ventilated façade that provides high bioclimatic performance.

**Location:**  
Casale Monferrato, Italy

**Typology:**  
New construction (extension)

**Year:**  
2019

**Status:**  
Completed

**Dimensions:**  
1.035 sqm

**Budget:**  
€ 1.5 mln

**Client:**  
Municipality of Casale Monferrato

**Activities:**  
AR - ST - MEP design



Integration with the existing context





Interiors - Sports court

The architectural organism constitutes the new fulcrum around which the various functions revolve.

## SPORT

# "Matteotti" Gym

## Sport and education. A welcoming and functional gym

The new gym of the Matteotti Institute in Pisa is a project that pursues balance, harmony with the context and order in its layout.

The **multifunctional court**, designed in compliance with CONI standards, obtains a central position in the functional layout: a unique and flexible space, featuring an exposed wooden structure that innervates the space and gives back a warm and welcoming ambiance for athletes and spectators.

The **facade** facing the institute is outlined by a linear opening that develops along the entire length of the elevation, creating a dynamic combination of light and shadows that characterizes the interior space.

The simplicity of the volumes is reinterpreted in the design of the open areas, in which **nature** is the subject and frame of the sports experience.

**Location:**  
Pisa, Italy

**Typology:**  
New construction

**Year:**  
2020

**Status:**  
Under construction

**Dimensions:**  
2.000 sqm

**Budget:**  
€ 3 mln

**Client:**  
Province of Pisa

**Activities:**  
AR - ST - MEP design

**Collaborators:**  
Studio Masiello strutture,  
Eng. Stefano Liberatori



Relation with "Matteotti" Institute





Main access



Secondary entrance

From a gymnasium to a sports hall open to the community, a flexible and modern place.

SPORT

# Multifunctional Sports Hall

## Synthetic lines for functional and adaptable interiors

The project involves **replacing the current school gymnasium** with a modern and functional **sports hall**, which can be used both by the adjacent school and for training sessions and matches of local sports clubs.

The new hall was designed according to the current CONI regulations and will be able to accommodate up to **400 spectators**.

For better management of the facility, **a movable partition sheet** allows the playing area to be divided into two volleyball courts, so that **several classes or teams can be accommodated at the same time** during training.

The **public area** is equipped with a

**refreshment area** from which one can also access a large outdoor solarium with a view of the playing field through large windows that allow to follow the sporting activities also from outside

The envelope is characterised by a succession of opaque and transparent portions of regular shapes, for a **simple but recognisable language**.

**Location:**  
Nembro, Italy

**Typology:**  
New construction

**Year:**  
2020 - 2021

**Status:**  
Under construction

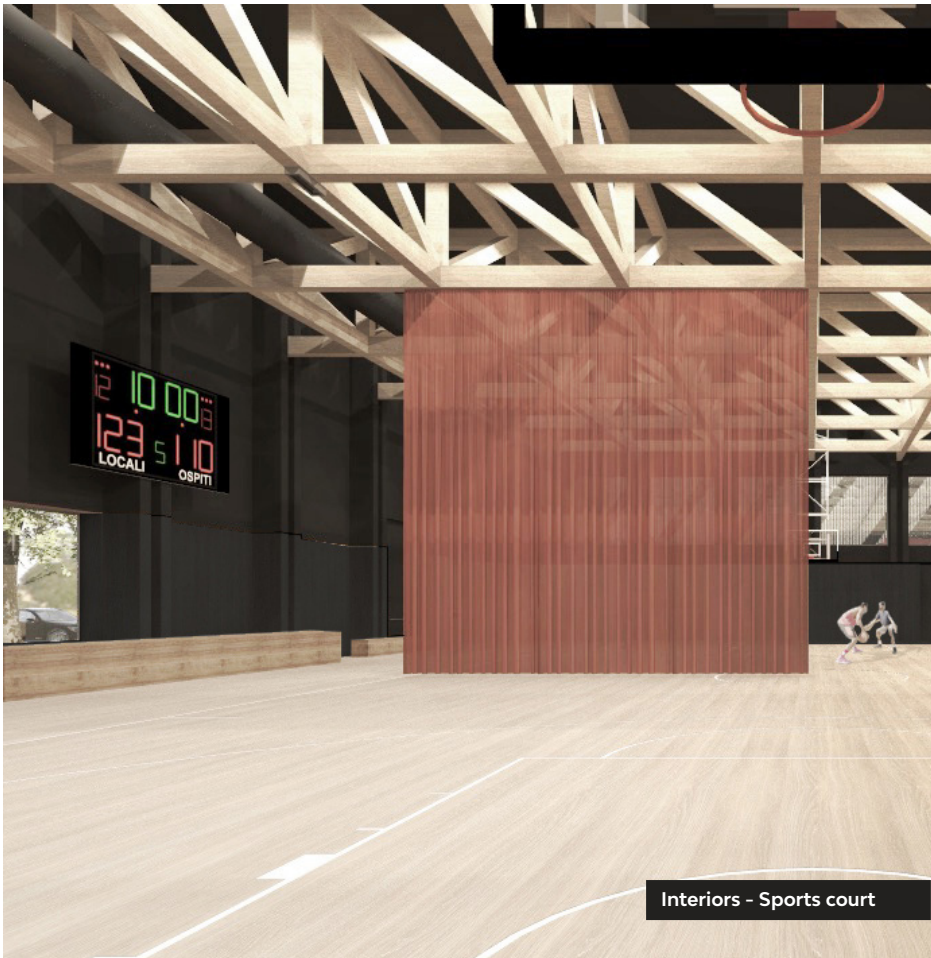
**Dimensions:**  
2.000 sqm

**Budget:**  
€ 2 mln

**Client:**  
Municipality of Nembro

**Activities:**  
AR - ST - MEP design

**Collaborators:**  
Didonè Comacchio Architects



Interiors - Sports court





Spaces for sport become a place for the daily experience of a community.

SPORT

## Perignano Sports Center

### Sports architecture. The new dimension of the Frates ASD Sports Center in Perignano

The adaptation project of the Frates Perignano ASD Sports Center is an intervention articulated on the needs of the community which, starting from the pre-existing ones, responds to the prospect of developing the sports area according to the standards of the football D series and the youth sector.

The architecture interprets the different synergies of a strongly characterized territory and returns, through an integrated process, spaces and structures that characterize the peripheral area as functional and organic to the development of the urban and social fabric. The expansion of the stands of the "Mauro Matteoli" sports facility is accompanied by the demolition and reconstruction of the new cultural center, part of the surface of which is intended for accessory functions such as the changing rooms serving the main field. The overall

expansion of the center also counts on the consolidation of the youth sector and the football school, with two fields respectively for eleven and seven, and related changing rooms.

The tennis centre, an integral part of the complex and engine of the diversification offered to the audience of users, has also been expanded and renovated according to the highest standards of sustainability and energy efficiency.

The Frates Perignano ASD Sports Center is such a place that interprets the contemporary concept of sporting experience. Its functionality is in fact extended and transversal and not confined to times and activities exclusively linked to the sporting event, thus becoming a structure with its own urban dimension, recognizable and recognized by the community.



**Location:**  
Perignano, Italy

**Typology:**  
Sport

**Year:**  
2021 - in corso

**Status:**  
Progettazione in corso

**Budget:**  
4 mln

**Client:**  
Municipality of Casciana Terme - Lari

**Activities:**  
AR - ST - MEP Design





# ATI | Project

CREATING A BETTER REALITY

PISA  
MILAN  
BELGRADE  
ODENSE  
COPENHAGEN  
PARIS  
GENEVA  
TALLINN