

# ATI | Project

Creating a  
better reality

C O M P A N Y   P R O F I L E



# RESEARCH AND INNOVATION FOR SPACES AND ENVIRONMENTS IN CONSTANT EVOLUTION

**A** COMPANY PROFILE

## Table of contents

<b>Profile</b> .....	pg.	5
<b>Team &amp; values</b> .....	pg.	7
<b>Services</b> .....	pg.	11
<b>Works</b> .....	pg.	15
Office .....	pg.	16
Healthcare .....	pg.	18
Residential .....	pg.	20
Education .....	pg.	22
Sport .....	pg.	24
Hospitality .....	pg.	26
Commercial & infrastructural .....	pg.	28
<b>Certifications</b> .....	pg.	30



# PEOPLE AND THE ENVIRONMENT AT THE CENTER OF DESIGN FOR PLACES AND CONTEXTS OF THE FUTURE



New Padua Hospital, Italy



- PISA
- MILAN
- BELGRADE
- ODENSE
- COPENHAGEN
- PARIS
- GENEVA
- TALLINN

## ▲ PROFILE

### Creating a better reality

Architecture and technology conceived as a source of inspiration and enrichment of everyday life

**ATI Project** is an international firm specialized in **integrated design** in the field of architecture and engineering, committed to the development of **sustainable buildings** with a reduced environmental impact.

The studio was established in 2011 by **Branko Zrnic** and **Luca Serri**, founders dedicated to research in bioclimatic architecture and renewable energy.

In just over a decade, the **team** has grown from **2 to 350 collaborators**.

The initial outline of the office is the same that still drives its growth today: a young, visionary, technological studio that

natively uses BIM to promote **multidisciplinarity**, as well as **innovation** and **sustainability**.

The complexity and number of projects reflect the **internationality** of the studio, which today, in addition to its headquarters in **Pisa**, has offices in **Milan, Belgrade, Odense, Paris, Copenhagen, Geneva** and **Tallinn**.



13

YEARS OF CONSTANT GROWTH



25 Mln

TURNOVER IN EUROS



8

INTERNATIONAL OFFICES



1+ Million of m<sup>2</sup>

OF COMPLETED OR ONGOING PROJECTS





ATI Sport Day

A young, motivated and multidisciplinary team of architects and engineers sharing the same goal: to design buildings thought up for the future.

**A** TEAM

## Being responsible, beyond business

The driving force behind ATI Project has always been the **cohesive, heterogeneous** and **energetic team** that characterizes the studio. The ATI team is today a numerous and multidisciplinary group of professionals, with different and complementary skills.

The studio's **corporate culture** is built around **sustainability** and the **spirit of sharing**. It is part of a broader vision and commitment to stimulating change through small but constant widespread actions, which is concretized through the **'ATI initiatives'**:

- **"Plant your tree"** contributes to reforestation: more than 4200 trees have been planted for over 1100 tons of captured CO<sub>2</sub>;

- **Corporate volunteering** combines the pleasure of spending time together and commitment to the environment. The team collected over 600 kg of waste so far, on the beaches and parks of Tuscany, in collaboration with Legambiente;
- Through **"Support a child"** ATI gives its contribution to over 50 children adopted at a distance with Actionaid;
- As a supporter of **I Bambini delle Fate**, the studio assists projects dedicated to social and work inclusion of persons with disabilities.

- CREATIVE
- SUSTAINABLE
- MULTICULTURAL
- MULTIDISCIPLINARY
- COHESIVE
- PROFESSIONAL
- EMPATHETIC
- INNOVATIVE
- VISIONARY

**A** VALUES

## Creting value, cultivating values

Growth as the profound link between what we do and what we believe in

ATI Project's philosophy presupposes the professionalism, ambition and tenacity of those who, every day, make a **responsible** commitment to **building a better future, respecting people, safety and the environment.**

Giving substance to its principles, creating a deep link between what it achieves and what it believes in; this is the **ethical commitment** of ATI Project.



350+

PROFESSIONALS ON THE TEAM



8

LANGUAGES SPOKEN



50+

LONG DISTANCE ADOPTIONS



4.200+

TREES PLANTED





Nyt OUH University Hospital, Odense, Denmark





# INTEGRATED APPROACH FOR SHARED AND TRANSPARENT DESIGN

## A full range of services based on continuous research and innovation

### INTEGRATED DESIGN

- Architectural design
- Structural design
- Plant design
- Specialist sectors
  - BIM division
  - Sustainability & comfort
  - Fire engineering
  - Facade design
  - Medical planning
  - Visual design
- Construction management

In ATI Project, **integrated design** is natively developed in BIM. From the initial stages the **interdisciplinary team** - composed of architects, engineers and specialized technicians - starts the design process that includes all aspects gravitating around the future realization.

The aim is a **harmonious combination of form and technology**, an overall result that leaves no scope behind.

### TENDER MANAGEMENT



400+

TENDERS WON



45%

SUCCESS RATE



3 Billion

TOTAL BUDGET OF ONGOING BUILDING SITES

- Value engineering
- Innovative construction technology
- Work and cash flow
- Time scheduling
- Critical path
- Bim Execution Plan
- Construction site management
- Business continuity
- Commissioning
- Facility management
- Operation & Maintenance services

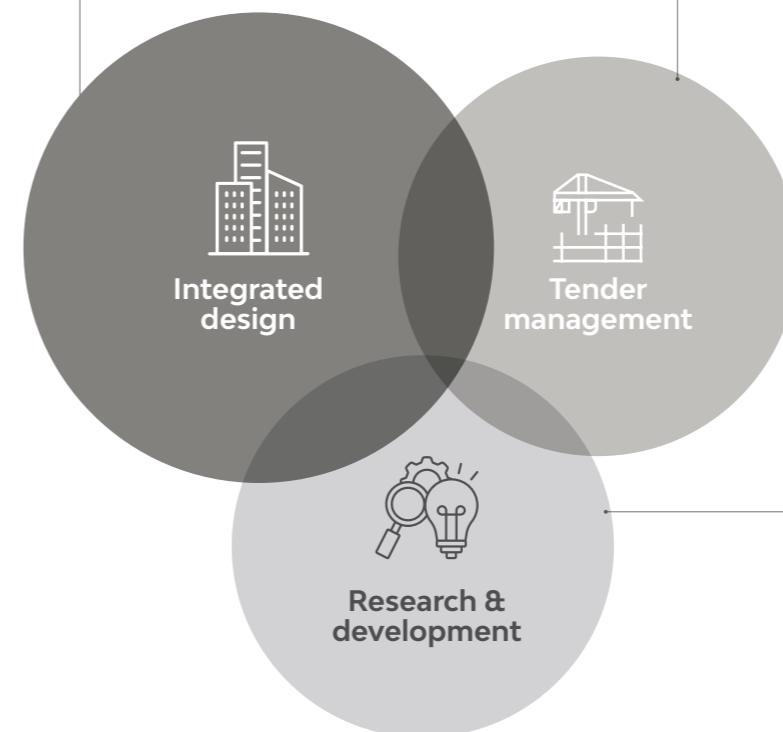
The drafting of technical offers for both **Works** and **Design and build** tenders in national and **international** context consist in the search for technically and economically optimised solutions for the central issues and criteria of the tenders.

ATI's success in the field is based on the **multidisciplinary expertise** of the team, know-how related to **innovative management tools** such as 4D and 5D, with continuous dialogue with suppliers and close collaboration with clients.

### RESEARCH & DEVELOPMENT

- Computational and generative design
- Artificial Intelligence - Machine learning and Deep Learning
- Web platforms and applications, Digital twins
- Virtual, augmented and mixed reality
- Data visualization, analysis and application to AEC
- Blockchain Technology and Smart Contracts for BIM process

**Research & development (R&D)** plays a crucial role in ATI's continuous **innovation** and a cutting-edge approach to design. R&D activities include a variety of macro areas focused on the **integration of technology and design**, with the aim of **optimizing processes, improving sustainability and anticipating future industry needs**.





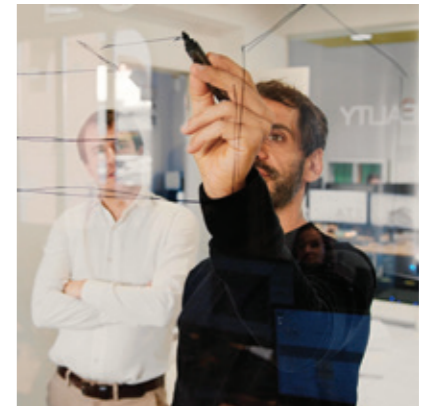


Kula Belgrade, Serbia





- OFFICE
- HEALTHCARE
- RESIDENTIAL
- EDUCATION
- HOSPITALITY
- SPORT
- CULTURE
- COMMERCIAL
- INFRASTRUCTURE



WORKS **^**

## Envision, create, design, integrate

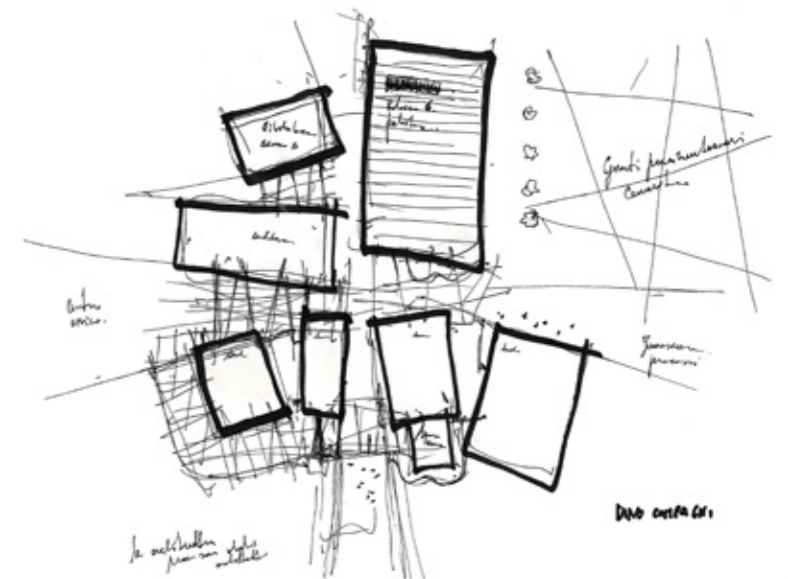
ATI Project's experience includes all the main project typologies

Over the years, the ATI team has conceived school and university campuses, built hospital centers, designed residential and tourist hotel areas, designed sports facilities and cultural centers, thought new paradigms of social life, outlined modern ideas of living.

Every project is a world in itself, a path that starts from **creativity** and is concretized through **listening, dialogue**, organization and

a conscious use of technological and innovative tools.

The constant that unites every project is the **rigorous and integrated working method**, which makes it possible to manage complexity by creating optimization paths oriented towards **quality** and **sustainability**.





## Office

Everyday spaces and places describe the perimeter of the working environment, interpreting contemporary needs and requirements.

ATI Project uses a flexible metric, centred on people and functions. The result is a synthesis of constant research, a combination of technology and sustainability.



Project Management for United Nations Office at Geneva, Switzerland



Project Management for Segreen Buildings, Milan, Italy



"Umberto Forti" Headquarters, Pisa, Italy



"Dabormida" Barracks renovation, Turin, Italy



## Healthcare

Care and health are the key players of hospital projects: places designed for patients, visitors and medical staff.

ATI Project conceives healthcare facilities as technological center that promote the effectiveness of therapeutic activities and convey sensitivity to hospitality and sustainability.



Siena Hospital - Volano Building, Siena, Italy



Belgrade General Hospital, Serbia



Bispebjerg Hospital, Copenhagen, Denmark



Nyt OUH University Hospital, Odense, Denmark



Tallinn Hospital, Estonia



Padua Hospital, Italy



## Residential

The private dimension of living becomes a personal experience of sharing and intimacy.

ATI Project uses a design approach that enhances the role of sociality and human relations in residential projects, with solutions aimed towards individual well-being and living comfort, spacing from singular homes, to residential complexes and student housing.





## Education

Building to grow and educate. The places of learning are designed to stimulate curiosity and inclusivity, the protagonists of each student's journey.

ATI Project defines school architecture as a setting for dialogue and debate. Each project becomes an opportunity to enhance the urban fabric, a social catalyst and a renewed bond between the users and the environment.



"Amerigo Vespucci" Technical Nautical Institute, Gallipoli, Italy



"A. Trevigi" School Extension, Casale Monferrato, Italy



Restoration of Scuola Normale Superiore, Pisa, Italy



Via Brocchi Elementary School, Milan, Italy



School Campus in Via Scialoia, Milan, Italy



University of Florence - DAGRI Complex, Sesto Fiorentino, Italy



"Dino Compagni" School Complex, Florence, Italy



## Sport

All-encompassing experiences that immerse in a spectacle that goes beyond the sporting event. This is the objective of our architecture dedicated to sport, in here space is a synthesis between technical requirements and the enhancement of the overall experience.

ATI Project interprets the immersive culture of contemporary sports with unique architectural solutions designed to engage and reflect the approach to sustainable building.



"Matteotti" Gym, Pisa, Italy



Rugby Arena, Pisa, Italy



Stadium Arena, Pisa, Italy



Franchi Stadium design competition, Florence, Italy



## Hospitality

Architectures for relaxation and hospitality, where comfort and design play a synergistic role in the guest experience.

ATI Project designs facilities that interpret the temporal dimension of travelling on various scales, respecting the tradition of places and the highest standards of sustainable design.



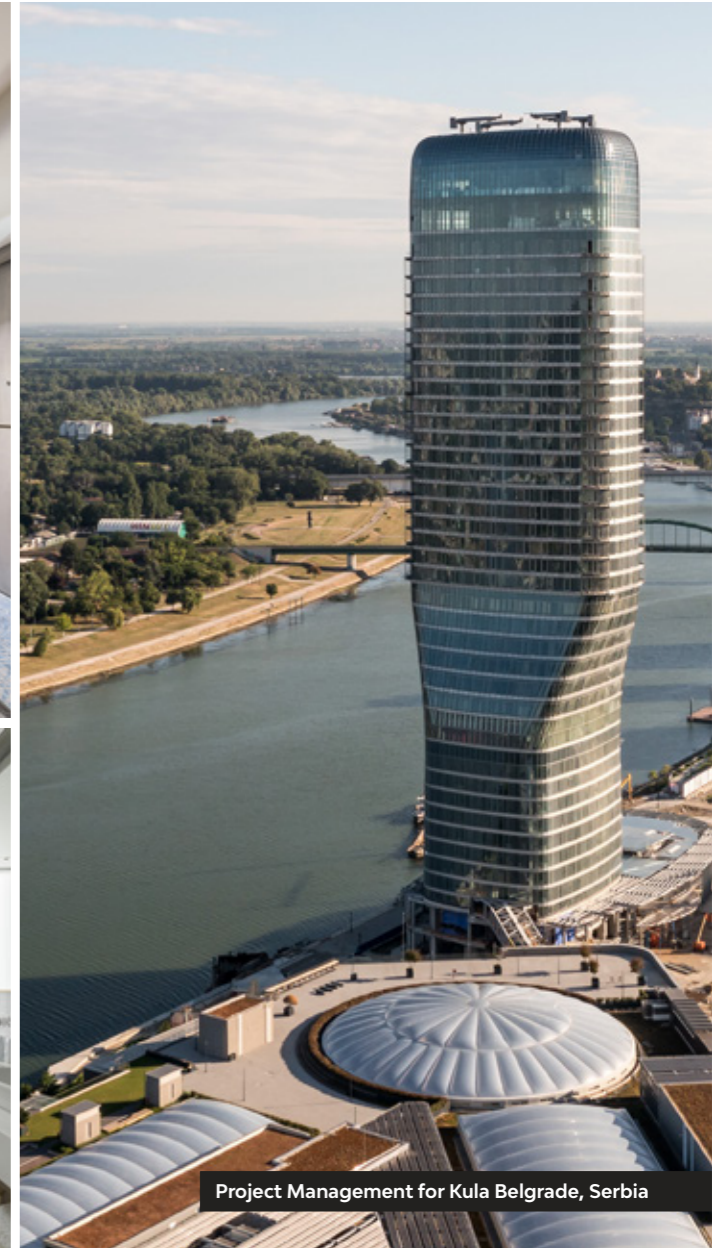
Salza Self-Service, Pisa, Italy



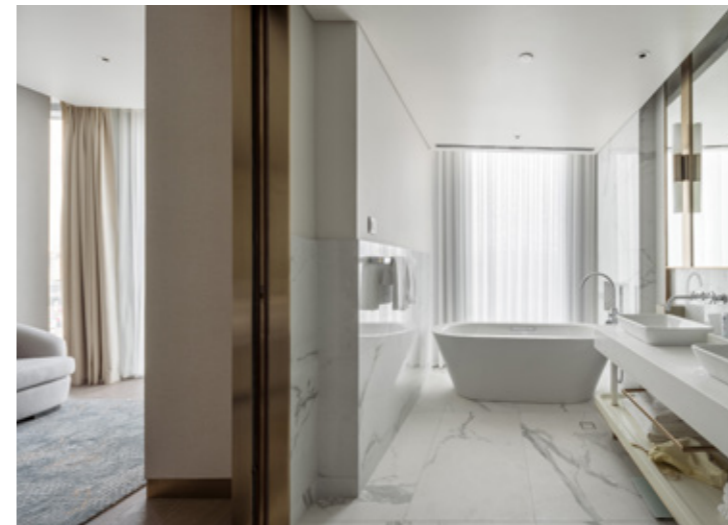
Silva Mountain Resort, Mittenwald, Germany



Toscana Resort Castelfalfi Requalification, Italy



Project Management for Kula Belgrade, Serbia





## Commercial & Infrastructural

Aesthetic and functional research for urban architecture.

ATI Project interprets the development of places of retail and infrastructure with attention to social dynamics and the needs of users, declining the centrality of man in sustainable technological solutions, through responsible and environmentally friendly design.



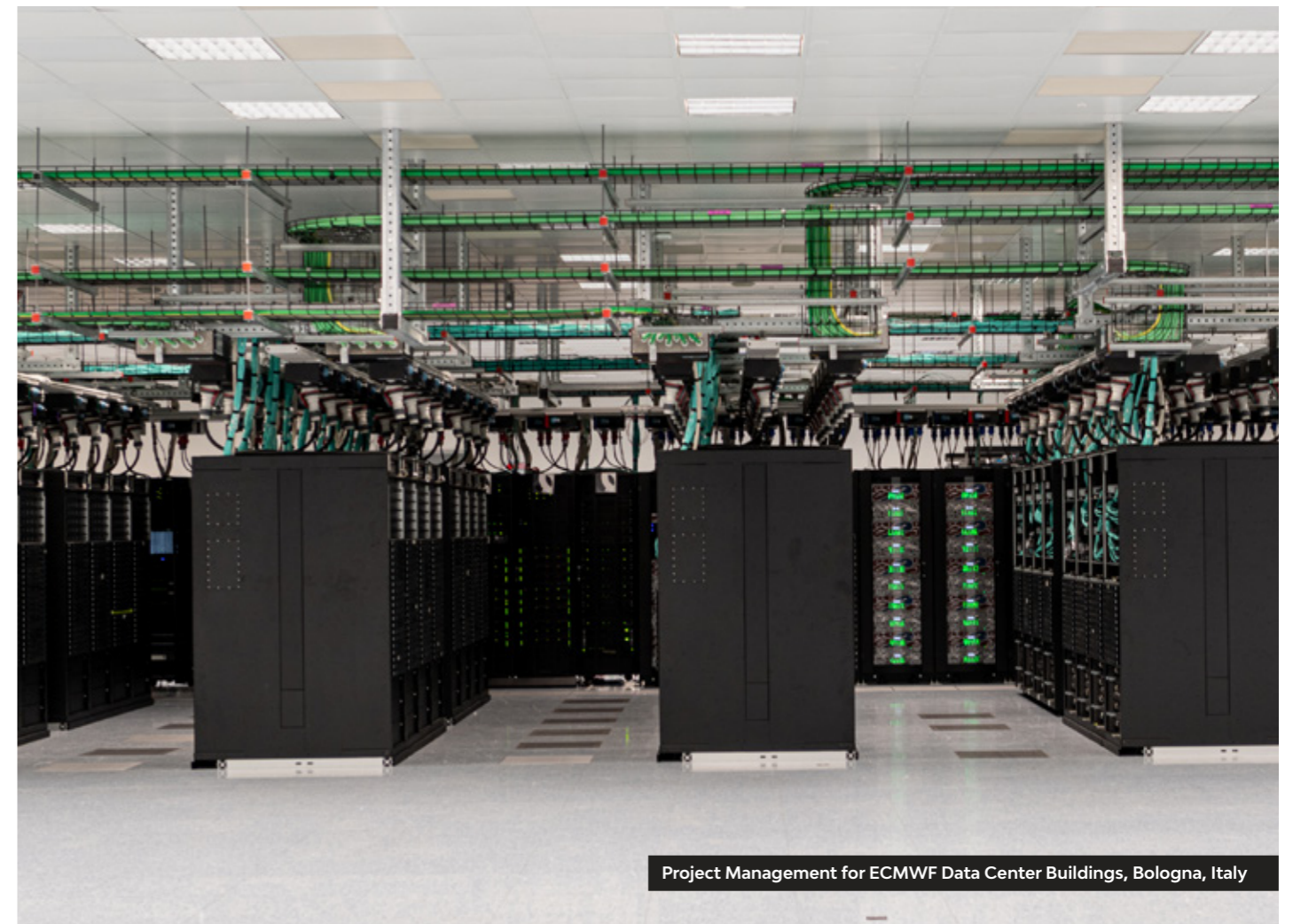
De Gasperi Car Park, San Donato Milanese, Italy



Taranto - Grottaglie Airport, Grottaglie, Italy



Project Management for Shopping Mall Gran Reno, Bologna, Italy



Project Management for ECMWF Data Center Buildings, Bologna, Italy



## Certifications



BIM UNI PDR 74:2019  
CERTIFIED COMPANY



ISO 9001:2015  
CERTIFIED COMPANY



ISO 14001:2015  
CERTIFIED COMPANY



ISO 45001:2018  
CERTIFIED COMPANY



UNI PDR 125:2022  
CERTIFIED COMPANY



SA 8000:2014  
CERTIFIED COMPANY



MEMBER OF  
EFCA



MEMBER OF  
OICE



MEMBER OF GREEN  
BUILDING COUNCIL ITALIA



MEMBER OF CNETO  
ITALIAN NATIONAL CENTER  
FOR HOSPITAL BUILDING AND  
TECHNOLOGY



LEGAMBIENTE  
IDENTITY CARD



QUALITY POLICY  
ENVIRONMENT AND BIM



SOCIAL RESPONSIBILITY  
POLICY



GENDER EQUALITY  
POLICY

## Credits & Collaborations

### PROJECT MANAGEMENT FOR UNITED NATIONS OFFICE AT GENEVA

**Architectural design:** JV SOM And B+P  
**Structural design:** Igeni  
**Plants design:** RAPP  
**Landscape:** Oxalis  
**IT & audiovisual:** Shen Milson & Wilke  
**Security:** SBIS Securitas

### PROJECT MANAGEMENT FOR SEGREEN BUILDINGS

**Local & design architect:** Studio Elementare  
**Landscape:** Studio Elementare  
**Executive architect:** Tekne Spa  
**Structural and MEP design:** Tekne Spa  
**Fire Prevention:** Tekne S.p.a  
**Remediation:** Tekne S.p.a  
**Constructive structural design:** Ideas  
**Photo:** Andrea Zanchi Photography

### NYT OUH UNIVERSITY HOSPITAL

**Architectural concept:** C.F. Moller  
**Rendering:** MTSYS  
**Photo:** Andrea Zanchi

### BISPEBJERG HOSPITAL

**Preliminary design:** KHR Arkitekter A/S, ARUP,  
Urbanlab Nordic, EYP  
**Consultants:** Sweco - Creo Arkitekter

### NEW PADUA EAST HOSPITAL COMPLEX

**Collaborators:** Politecnica Ingegneria ed  
Architettura (JV Leader), Cooproggett, Techint

### SIENA HOSPITAL – VOLANO BUILDING

**PFFE:** Binini Partners

### TALLINN HOSPITALS

**Collaborators:** 3TI Progetti

### PROJECT MANAGEMENT FOR STUDENT HOUSE VIA GIOVENALE

**Architectural design:** Carmody Groarke, Calzoni  
Architetti

**Structural design:** B.Cube  
**Plant design:** ESA Engineering  
**Fire safety:** Jensen Hughes  
**Safety & environment:** REEAS  
**Landscape:** Arch. Giovanna Longhi  
**Photo:** Andrea Zanchi

### "DINO COMPAGNI" SCHOOL COMPLEX

**Photo:** Andrea Zanchi

### "A. TREVIGI" SCHOOL EXTENSION

**Photo:** Andrea Zanchi

### SCHOOL CAMPUS IN VIA SCIALOIA

**Preliminary design:** Modus Architects

### UNIVERSITY OF FLORENCE – DAGRI PROJECT

**Preliminary design:** Laboratorio sperimentale di Ateneo  
- UNIFI  
**Collaborators:** Tekne Spa

### TUSCANY RESORT CASTELFALFI REDEVELOPMENT

**Interior design:** Blue Sky Hospitality Ltd, Affine Design,  
Caberlon Caroppi  
**Photo:** Alessandro Moggi

### PROJECT MANAGEMENT FOR KULA BELGRADE

**Architectural concept:** Skidmore, Owings & Merrill LLP  
**Designer / consultant:** AECOM Middle East  
**Interior design:** HOK

### TARANTO – GROTTAGLIE AIRPORT

**Final project:** Studio Tecnico Cnc, Arch. G.G.I. Trione, Gnt  
Progetti, Ing. V. F. Scalaria

### DE GASPERI CAR PARK

**Photo:** Andrea Zanchi

### PROJECT MANAGEMENT FOR SHOPPING MALL GRAN RENO

**Architectural concept:** Design International  
**Architectural and structural design:** Planning  
**Mechanical plants design:** Studio Nocera  
**Electrical and special design:** SyTec  
**Landscape:** Studio Silva  
**Photo:** Andrea Zanchi

### ECMWF DATA CENTER

**Architectural design and coordination:** Gmp  
Architekten von Gerkan, Marg und Partner  
**Plants design:** Studio T  
**Structural design:** Werner Sobek Stuttgart  
**Landscape:** LAND Italia  
**Photo:** ECMWF





PISA  
MILAN  
BELGRADE  
ODENSE  
COPENHAGEN  
PARIS  
GENEVA  
TALLINN

**Pisa office**

Via G.B. Picotti, 12/14  
56124 Pisa, Italy  
Tel: +39 050578460

**Milan office**

Via Imbonati 18 (c/o Mac7)  
20159 Milan, Italy  
Tel: +39 0236572548

**Belgrade office**

Petra Kočića 16,  
11080 Belgrade, Serbia  
Tel: +381 11 7704512

**Odense office**

Glisholmvej 2A,  
5260 Odense S, Denmark

**Copenhagen office**

H.C. Andersens Boulevard 37  
1553 Copenhagen, Denmark

**Paris office**

H19 Boulevard Sebastopol,  
75001 Paris, France

**Geneva office**

Rue du Cendrier 12-14  
1201 Geneva, Switzerland

**Tallinn office**

Järvevana tee 7b, A-korpus, 4. korrus  
10138 Tallinn, Estonia