

ATI | Project

Creating a
better reality

C O M P A N Y P R O F I L E

Table of contents

Profile pag. 5

Team & values pag. 6

Services pag. 8

Works

 Office pag. 14

 Healthcare pag. 20

 Residential pag. 26

 Education pag. 30

 Sport pag. 36

 Hospitality pag. 42

 Commercial & infrastructural pag. 46

Certifications pag. 54



New Hospital in Padua, Italy



- PISA
- MILAN
- BELGRADE
- ODENSE
- COPENHAGEN
- PARIS
- GENEVA
- TALLINN

A PROFILE

Creating a better reality

Architecture and technology conceived as a source of inspiration and enrichment of everyday life

ATI Project is an international firm specialized in **integrated design** in the field of architecture and engineering, committed to the development of **sustainable buildings** with a reduced environmental impact.

The studio was established in 2011 by **Branko Zrnic** and **Luca Serri**, founders dedicated to research in bioclimatic architecture and renewable energy.

In just over a decade, the **team** has grown from **2 to 350 collaborators**.

The initial outline of the office is the same that still drives its growth today: a young, visionary, technological studio that

natively uses BIM to promote **multidisciplinarity**, as well as **innovation** and **sustainability**.

The complexity and number of projects reflect the **internationality** of the studio, which today, in addition to its headquarters in **Pisa**, has offices in **Milan, Belgrade, Odense, Paris, Copenhagen, Geneva** and **Tallinn**.



14

YEARS OF CONSTANT GROWTH



25 Mln

TURNOVER IN EUROS



8

INTERNATIONAL OFFICES



1+ Million of m²

OF COMPLETED OR ONGOING PROJECTS



A young, motivated and multidisciplinary team of architects and engineers sharing the same goal: to design buildings thought up for the future.

TEAM

Being responsible, beyond business

The driving force behind ATi Project has always been the **cohesive, heterogeneous and energetic team** that characterizes the studio. The ATi team is today a numerous and multidisciplinary group of professionals, with different and complementary skills.

The studio's **corporate culture** is built around **sustainability** and the **spirit of sharing**. It is part of a broader vision and commitment to stimulating change through small but constant widespread actions, which is concretized through the **'ATi initiatives'**:

- **"Plant your tree"** contributes to reforestation: more than 4200 trees have been planted for over 1100 tons of captured CO₂;

- **Corporate volunteering** combines the pleasure of spending time together and commitment to the environment. The team collected over 600 kg of waste so far, on the beaches and parks of Tuscany, in collaboration with Legambiente;
- Through **"Support a child"** ATi gives its contribution to over 50 children adopted at a distance with Actionaid;
- As a supporter of **I Bambini delle Fate**, the studio assists projects dedicated to social and work inclusion of persons with disabilities.

- CREATIVE
- SUSTAINABLE
- MULTICULTURAL
- MULTIDISCIPLINARY
- COHESIVE
- PROFESSIONAL
- EMPATHETIC
- INNOVATIVE
- VISIONARY

VALUES

Creting value, cultivating values

Growth as the profound link between what we do and what we believe in

ATi Project's philosophy presupposes the professionalism, ambition and tenacity of those who, every day, make a **responsible** commitment to **building a better future, respecting people, safety and the environment.**

Giving substance to its principles, creating a deep link between what it achieves and what it believes in; this is the **ethical commitment** of ATi Project.



350+

PROFESSIONALS ON THE TEAM



8

LANGUAGES SPOKEN



60+

LONG DISTANCE ADOPTIONS



4.200+

TREES PLANTED

A full range of services based on continuous research and innovation

Integrated design

- Architectural design
- Structural design
- Plant design
- Specialist sectors
 - BIM division
 - Sustainability & comfort
 - Fire engineering
 - Facade design
 - Medical planning
 - Visual design
- Construction management

In ATI Project, **integrated design** is natively developed in BIM. From the initial stages the **interdisciplinary team** - composed of architects, engineers and specialized technicians - starts the design process that includes all aspects gravitating around the future realization.

The aim is a **harmonious combination of form and technology**, an overall result that leaves no scope behind.



400+
TENDERS WON



45%
SUCCESS RATE



3 Billion
TOTAL BUDGET OF ONGOING BUILDING SITES

Tender management

- Value engineering
- Innovative construction technology
- Work and cash flow
- Time scheduling
- Critical path
- Bim Execution Plan
- Construction site management
- Business continuity
- Commissioning
- Facility management
- Operation & Maintenance services

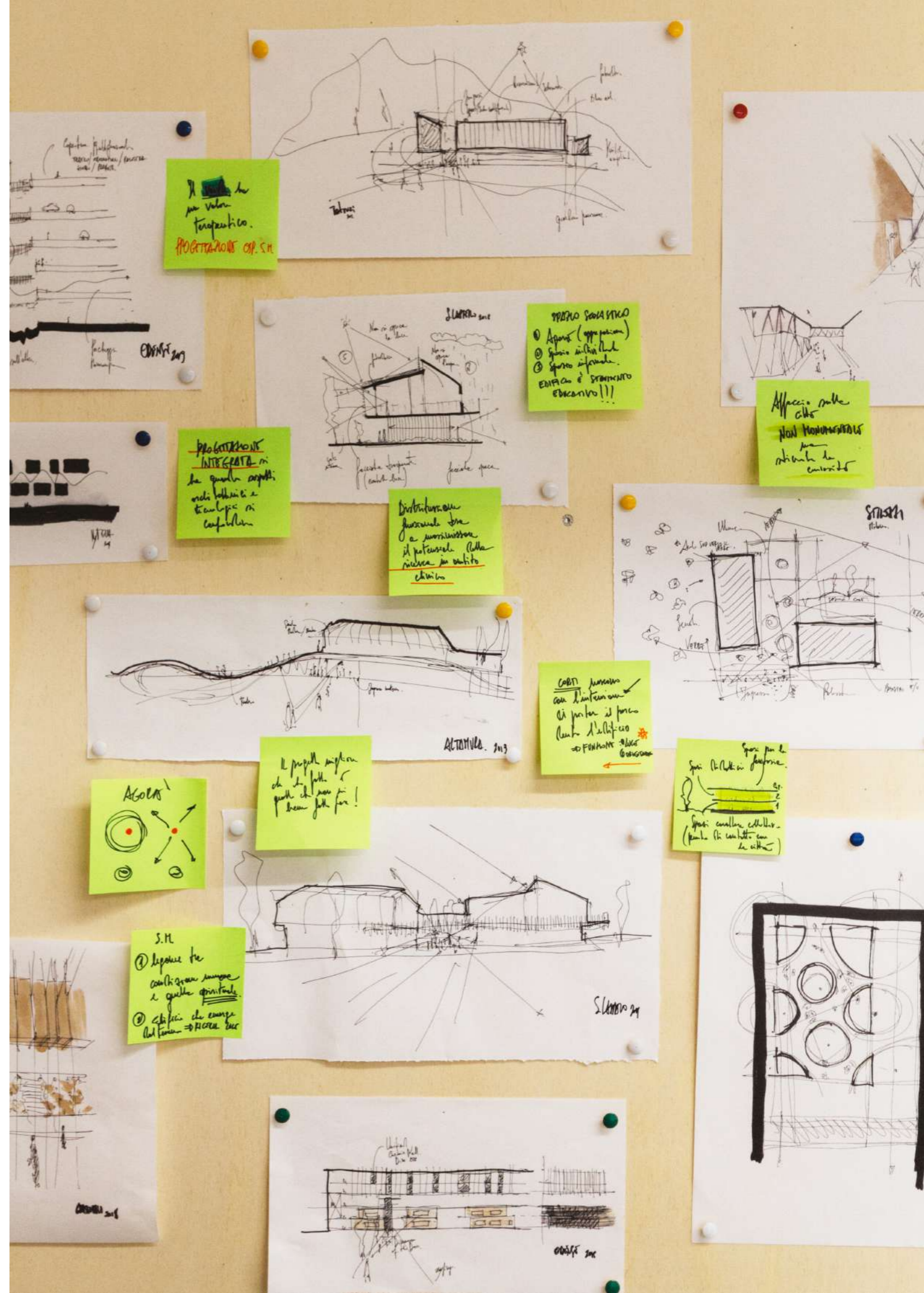
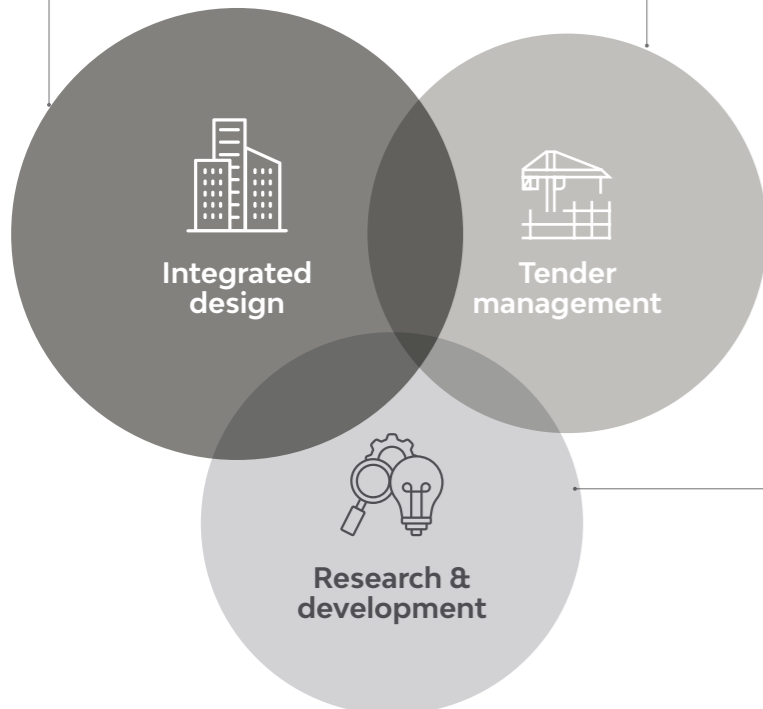
The drafting of technical offers for both **Works** and **Design and build** tenders in national and **international** context consist in the search for technically and economically optimised solutions for the central issues and criteria of the tenders.

ATI's success in the field is based on the **multidisciplinary expertise** of the team, know-how related to **innovative management tools** such as 4D and 5D, with continuous dialogue with suppliers and close collaboration with clients.

Research & development

- Computational and generative design
- Artificial Intelligence - Machine learning and Deep Learning
- Web platforms and applications, Digital twins
- Virtual, augmented and mixed reality
- Data visualization, analysis and application to AEC
- Blockchain Technology and Smart Contracts for BIM process

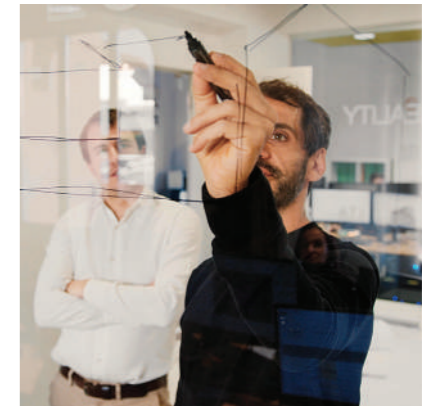
Research & development (R&D) plays a crucial role in ATI's continuous **innovation** and a cutting-edge approach to design. R&D activities include a variety of macro areas focused on the **integration of technology and design**, with the aim of **optimizing processes, improving sustainability and anticipating future industry needs**.





"Dino Compagni" School Complex, Florence, Italy

- OFFICE
- HEALTHCARE
- RESIDENTIAL
- EDUCATION
- HOSPITALITY
- SPORT
- CULTURE
- COMMERCIAL
- INFRASTRUCTURE



WORKS **^**

Envision, create, design, integrate

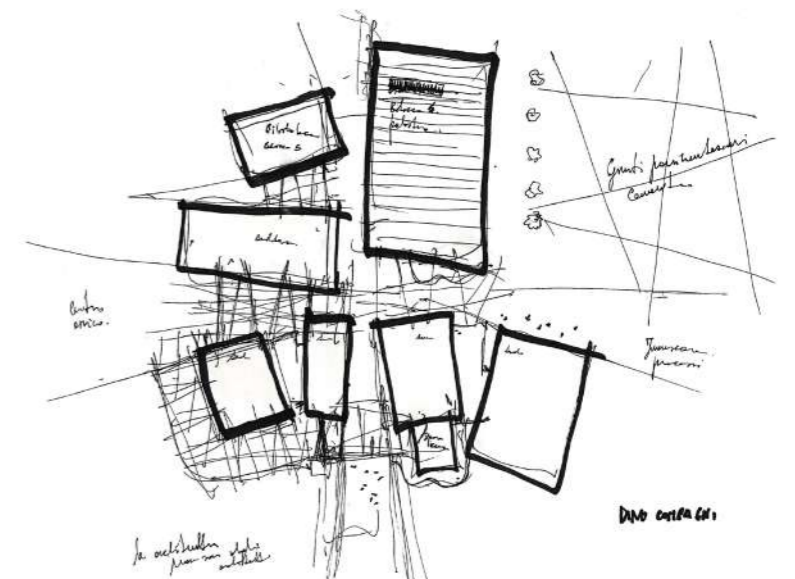
ATI Project's experience includes all the main project typologies

Over the years, the ATI team has conceived school and university campuses, built hospital centers, designed residential and tourist hotel areas, designed sports facilities and cultural centers, thought new paradigms of social life, outlined modern ideas of living.

Every project is a world in itself, a path that starts from **creativity** and is concretized through **listening, dialogue**, organization and

a conscious use of technological and innovative tools.

The constant that unites every project is the **rigorous and integrated working method**, which makes it possible to manage complexity by creating optimization paths oriented towards **quality** and **sustainability**.





Office

Everyday spaces and places describe the perimeter of the working environment, interpreting contemporary needs and requirements.

ATI Project uses a flexible metric, centred on people and functions. The result is a synthesis of constant research, a combination of technology and sustainability.

North Tower, Pisa, Italy





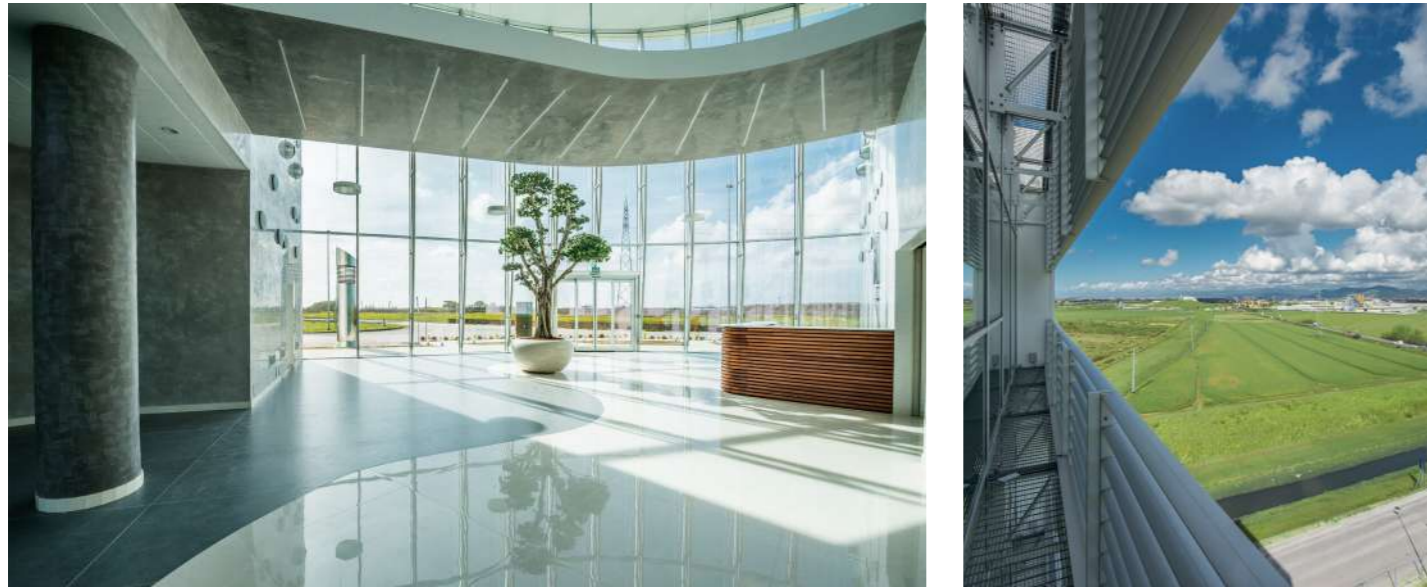
"Dabormida" Barracks renovation, Turin, Italy



Project Management for the renovation of the United Nations Offices, Geneva, Switzerland



"Umberto Forti" Headquarters, Pisa, Italy



Project Management for Segreen Buildings, Milan, Italy



Healthcare

Care and health are the key players of hospital projects: places designed for patients, visitors and medical staff.

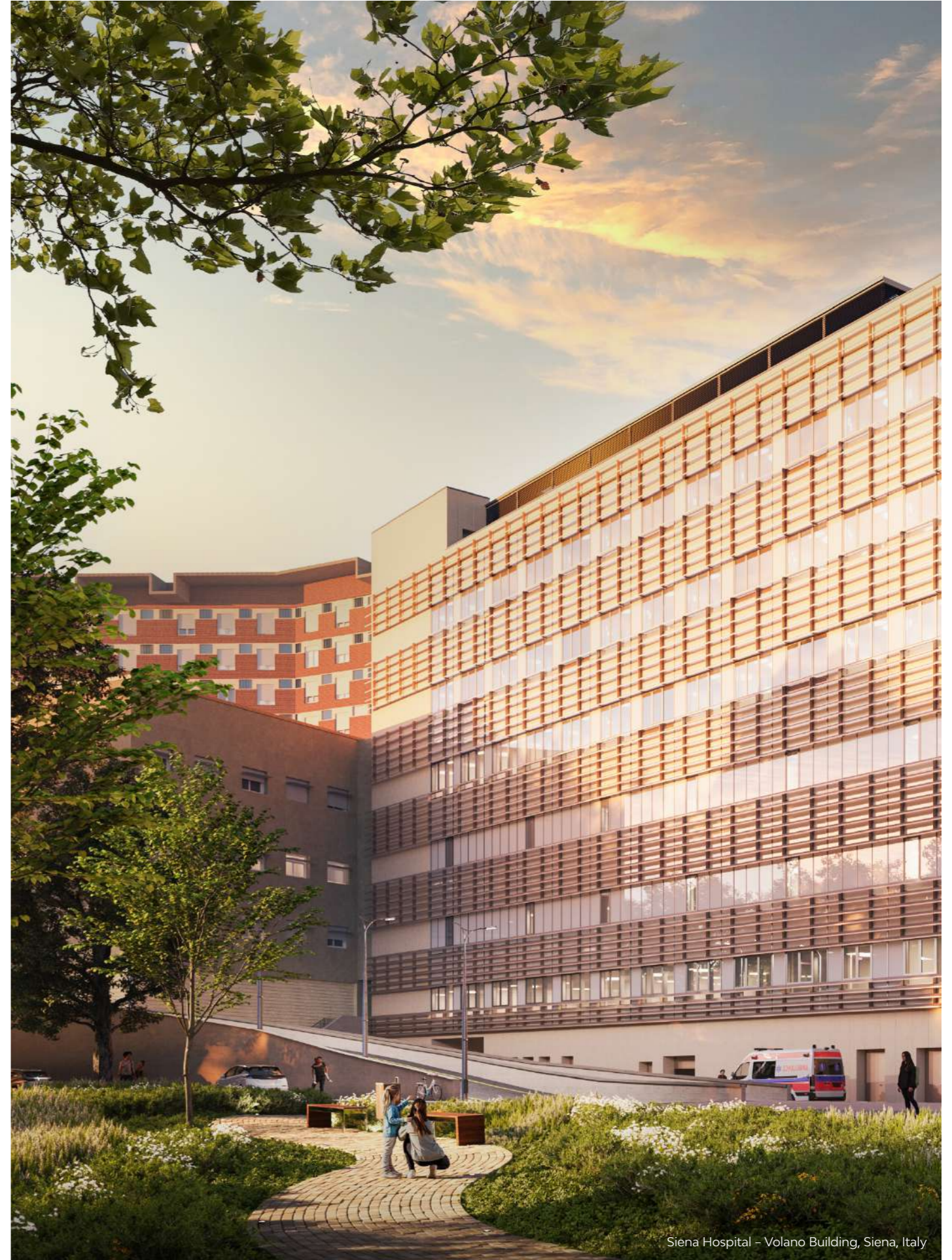
ATI Project conceives healthcare facilities as technological center that promote the effectiveness of therapeutic activities and convey sensitivity to hospitality and sustainability.

Nyt OUH University Hospital, Odense, Denmark





Padua Hospital, Italy



Siena Hospital - Volano Building, Siena, Italy

Bispebjerg Hospital, Copenhagen, Denmark



Inail Motor Rehabilitation Center, Volterra, Italy



Tallinn Hospital, Estonia



Cisanello Hospital Complex Expansion, Pisa, Italy



Residential

The private dimension of living becomes a personal experience of sharing and intimacy.

ATI Project uses a design approach that enhances the role of sociality and human relations in residential projects, with solutions aimed towards individual well-being and living comfort, spacing from singular homes, to residential complexes and student housing.

Cohousing Zero, Pisa, Italy



Project Management for Student House Giovenale, Milan, Italy



City Block, Pisa, Italy



New Ecodistrict Bertalia-Lazzaretto, Bologna, Italy



Urban Island Bertarelli, Milan, Italy



Anghiari home, Anghiari, Italy



Education

Building to grow and educate. The places of learning are designed to stimulate curiosity and inclusivity, the protagonists of each student's journey.

ATI Project defines school architecture as a setting for dialogue and debate. Each project becomes an opportunity to enhance the urban fabric, a social catalyst and a renewed bond between the users and the environment.

"Dino Compagni" School Complex, Florence, Italy





Restoration of Scuola Normale Superiore, Pisa, Italy



UNIFE Biomedical Chemical Hub, Ferrara, Italy

Via Brocchi Elementary School, Milan, Italy



School Campus in Via Scialoia, Milan, Italy



"Amerigo Vespucci" Technical Nautical Institute, Gallipoli, Italy



Sport

All-encompassing experiences that immerse in a spectacle that goes beyond the sporting event. This is the objective of our architecture dedicated to sport, in here space is a synthesis between technical requirements and the enhancement of the overall experience.

ATI Project interprets the immersive culture of contemporary sports with unique architectural solutions designed to engage and reflect the approach to sustainable building.

Rugby Arena, Pisa, Italy



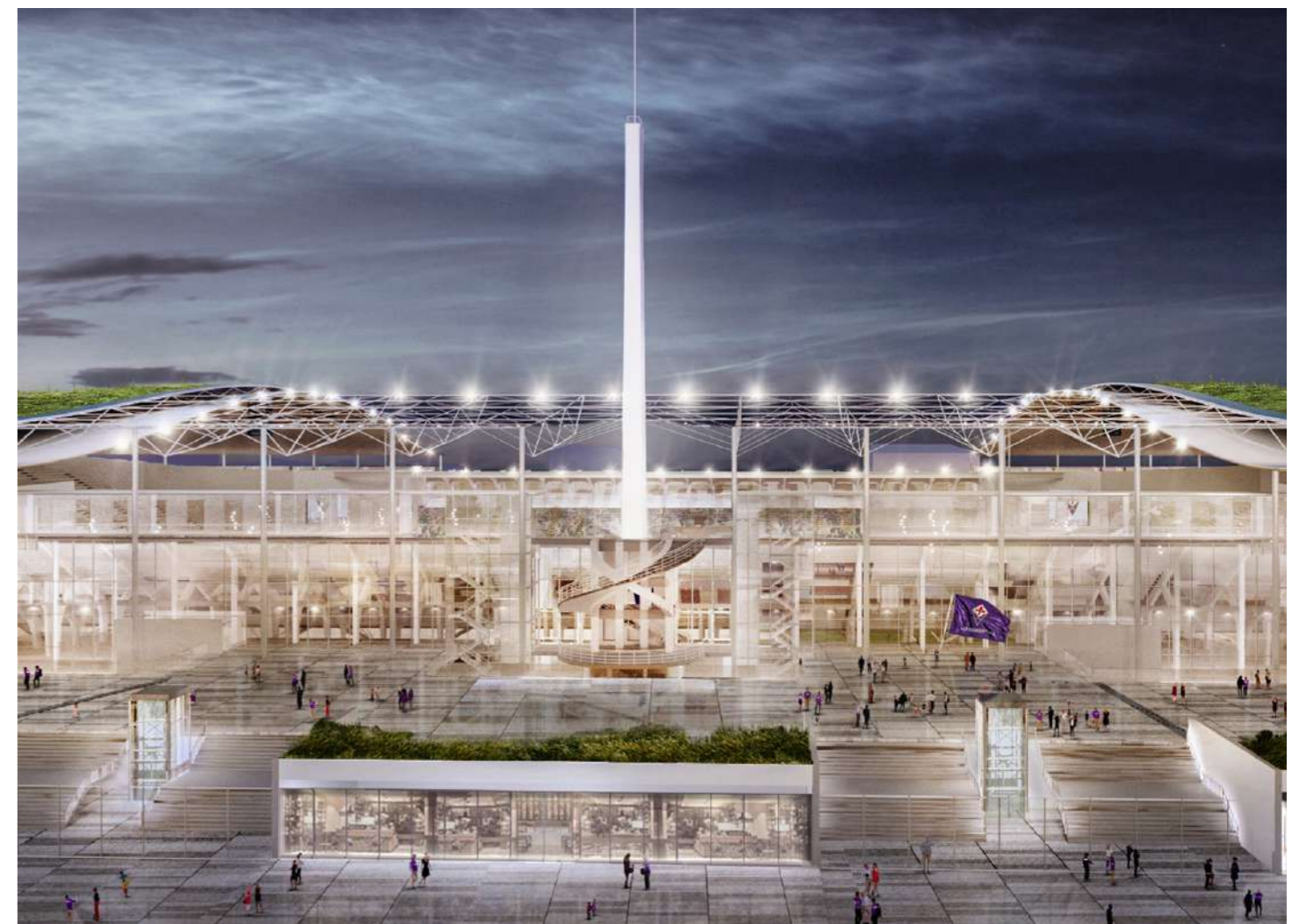
Pisa Training Centre, Pisa, Italy



Stadium Arena, Pisa, Italy



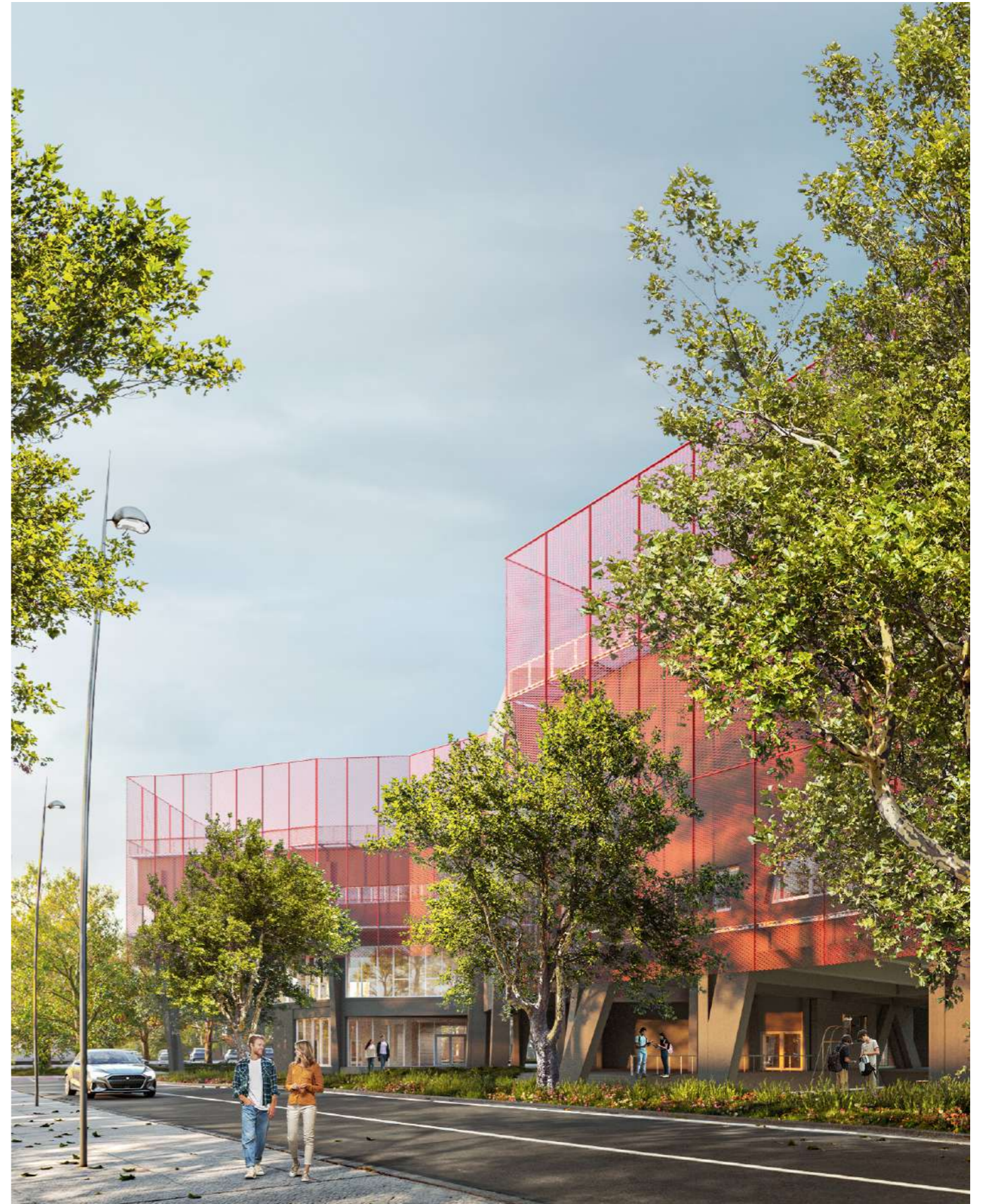
Franchi Stadium and Campo di Marte, Florence, Italy



"A. Trevigi" School extension, Casale Monferrato, Italy



Sports Center, Pordenone, Italy



Hospitality

Architectures for relaxation and hospitality, where comfort and design play a synergistic role in the guest experience.

ATI Project designs facilities that interpret the temporal dimension of travelling on various scales, respecting the tradition of places and the highest standards of sustainable design.

Toscana Resort Castelfalfi Requalification, Italy



Project Management for Kula Belgrade, Serbia



Hotel Miratorre, Pisa, Italy



Salza Self-Service, Pisa, Italy



Infrastructural & commercial

Aesthetic and functional research for urban architecture.

ATI Project interprets the development of places of retail and infrastructure with attention to social dynamics and the needs of users, declining the centrality of man in sustainable technological solutions, through responsible and environmentally friendly design.

Project Management for ECMWF Data Center Buildings, Bologna, Italy



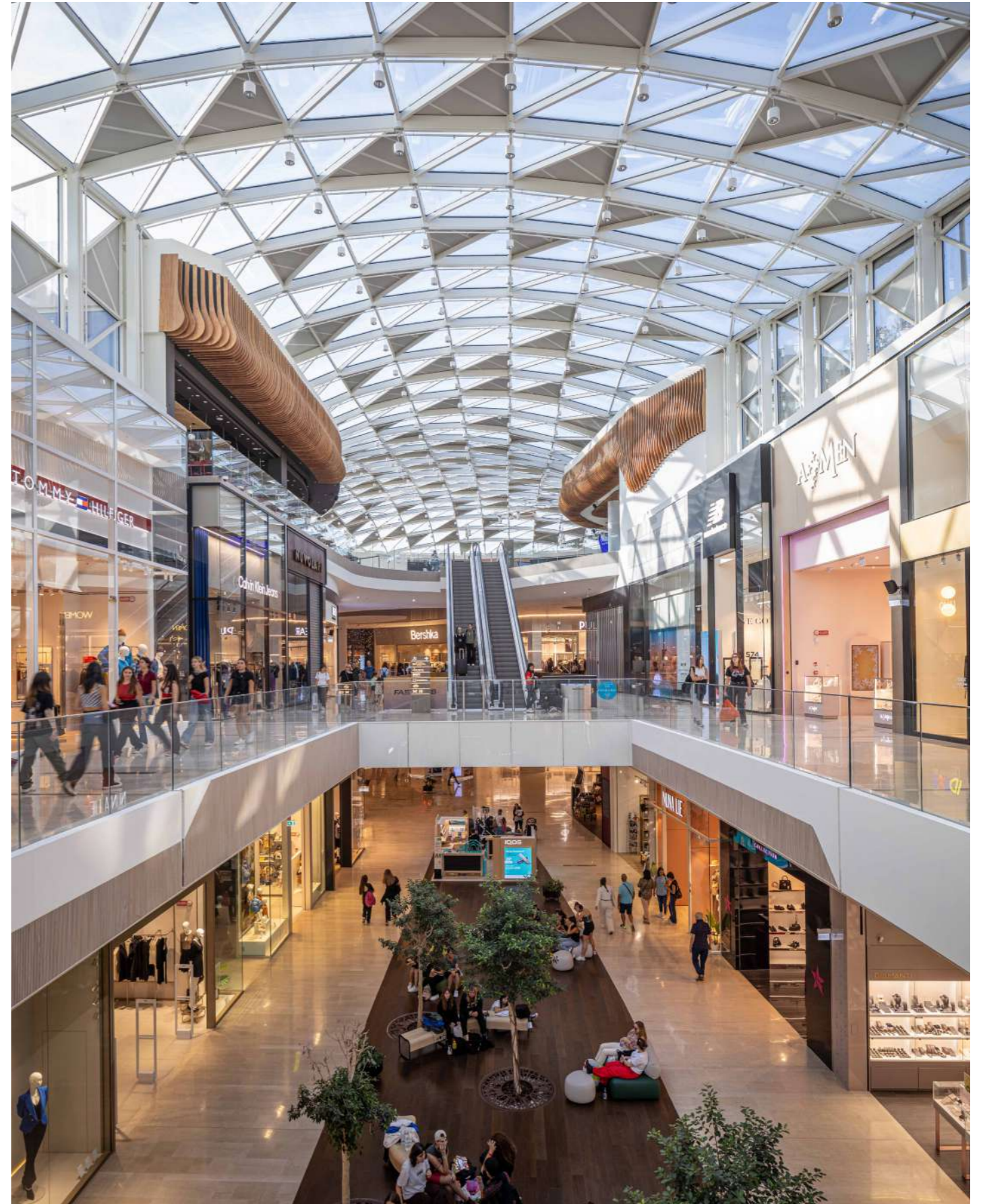
De Gasperi Car Park, San Donato Milanese, Italy



Taranto - Grottaglie Airport, Grottaglie, Italy



Project Management for Shopping Mall Gran Reno, Bologna, Italy





Certifications



BIM UNI PDR 74:2019
CERTIFIED COMPANY



ISO 9001:2015
CERTIFIED COMPANY



ISO 14001:2015
CERTIFIED COMPANY



ISO 45001:2018
CERTIFIED COMPANY



UNI PDR 125:2022
CERTIFIED COMPANY



SA 8000:2014
CERTIFIED COMPANY



ASSOCIATE OF
CONFINDUSTRIA
ASSOMMOBILIARE



MEMBER OF
OICE



MEMBER OF
EFCA



MEMBER OF CNETO
CENTRO NAZIONALE EDILIZIA
E TECNICA OSPEDALIERA



MEMBER OF GREEN
BUILDING COUNCIL ITALIA



LEGAMBIENTE
IDENTITY CARD



BIM QUALITY
ENVIRONMENT POLICY



SOCIAL RESPONSABILITY
POLICY



GENDER EQUALITY
POLICY

Credits & collaborations

NORTH TOWER

Concept and preliminary design:

Jean-Pierre Buffi, Beniamino Cristofani

PROJECT MANAGEMENT FOR UNITED NATIONS OFFICE AT GENEVA

Architectural design: JV SOM And B+P

Structural design: Igeni

Plants design: RAPP

Landscape: Oxalis

IT & audiovisual: Shen Milson & Wilke

Security: SBIS Securitas

PROJECT MANAGEMENT FOR SEGREEN BUILDINGS

Local & design architect: Studio Elementare

Landscape: Studio Elementare

Executive architect: Tekne Spa

Structural and MEP design: Tekne Spa

Fire Prevention: Tekne S.p.a

Remediation: Tekne S.p.a

Constructive structural design: Ideas

Photo: Andrea Zanchi Photography

NYT OUH UNIVERSITY HOSPITAL

Architectural concept: C.F. Møller

Rendering: MTSYS, **Photo:** Andrea Zanchi

NEW PADUA HOSPITAL

Collaborators: Politecnica Ingegneria ed Architettura (JV Leader), Coopprogetti, Techint

SIENA HOSPITAL – VOLANO BUILDING

Preliminary design: Binini Partners

BISPEBJERG HOSPITAL

Preliminary design: KHR Arkitekter A/S, ARUP, Urbanlab Nordic, EYP

Consultants: Sweco - Creo Arkitekter

TALLINN HOSPITALS

Collaborators: 3TI Progetti

Consultants: Esplan

CISANELLO HOSPITAL COMPLEX EXPANSION

Photo: Andrea Zanchi

PROJECT MANAGEMENT FOR STUDENT HOUSE VIA GIOVENALE

Architectural design: Carmody Groarke, Calzoni Architetti

Structural design: B.Cube

Plant design: ESA Engineering

Fire safety: Jensen Hughes

Safety & environment: REEAS

Landscape: Arch. Giovanna Longhi

Photo: Andrea Zanchi

NEW ECODISTRICT BERTALIA-LAZZARETTO

Collaborators: A-fact architecture factory, Weber Architects, Parcnoveau

ANGHIARI HOME

Photo: Andrea Zanchi

"DINO COMPAGNI" SCHOOL COMPLEX

Photo: Andrea Zanchi

SCUOLA NORMALE SUPERIORE

Photo: Andrea Zanchi

UNIFE BIOMEDICAL CHEMICAL HUB

Preliminary and final design: Rossiprodi Associati Srl - S.B. Arch Bargone Architetti Associati - Ingegneri Riuniti Spa - Geo Group Srl

SCHOOL CAMPUS IN VIA SCIALOIA

Preliminary design: Modus Architects

RUGBY ARENA

Photo: Andrea Zanchi

"A. TREVIGI" SCHOOL EXTENSION

Photo: Andrea Zanchi

PORDENONE SPORTS CENTER

Final design: B+C Architectes - Buromilan - Projema Engineering - Arch. A. Del Maschio - Ing. A. Della Vedova - CZ Studio - Ing. C. Vena - SRV Indagini Geologiche

TUSCANY RESORT CASTELFALFI REDEVELOPMENT

Interior design: Blue Sky Hospitality Ltd, Affine Design, Caberlon Caroppi

Photo: Alessandro Moggi

PROJECT MANAGEMENT FOR KULA BELGRADE

Architectural concept: Skidmore, Owings & Merrill LLP

Designer / consultant: AECOM Middle East

Interior design: HOK

ECMWF DATA CENTER

Architectural design and coordination: Gmp

Architekten von Gerkan, Marg und Partner

Plants design: Studio T

Structural design: Werner Sobek Stuttgart

Landscape: LAND Italia, **Photo:** ECMWF

DE GASPERI CAR PARK

Photo: Andrea Zanchi

TARANTO – GROTTAGLIE AIRPORT

Final project: Studio Tecnico Cnc, Arch. G.G.I. Trione, Gnt Progetti, Ing. V. F. Scalera

PROJECT MANAGEMENT FOR SHOPPING MALL GRAN RENO

Architectural concept: Design International

Architectural and structural design: Planning

Mechanical plants design: Studio Nocera

Electrical and special design: SyTec

Landscape: Studio Silva, **Photo:** Andrea Zanchi

PISA
MILAN
BELGRADE
ODENSE
COPENHAGEN
PARIS
GENEVA
TALLINN

Pisa office

Via G.B. Picotti, 12/14
56124 Pisa, Italy
Tel: +39 050578460

Milan office

Via Imbonati 18 (c/o Mac7)
20159 Milan, Italy
Tel: +39 0236572548

Belgrade office

Petra Kočića 16,
11080 Belgrade, Serbia
Tel: +381 11 7704512

Odense office

Glisholmvej 2A,
5260 Odense S, Denmark

Copenhagen office

H.C. Andersens Boulevard 37
1553 Copenhagen, Denmark

Paris office

H19 Boulevard Sebastopol,
75001 Paris, France

Geneva office

Rue du Cendrier 12-14
1201 Geneva, Switzerland

Tallinn office

Järvevana tee 7b, A-korpus, 4. korrus
10138 Tallinn, Estonia