

^
P O R T F O L I O
HEALTHCARE



C R E A T I N G A B E T T E R R E A L I T Y

ATI | Project

Table of contents

Profilo	pg.	5
Works		
Nyt OUH University Hospital	pg.	6
Siena Hospital - Ambulatories	pg.	10
Siena Hospital - Laboratories	pg.	12
Siena Hospital - Volano Building	pg.	14
Belgrade General Hospital	pg.	16
Inail Motor Rehabilitation Center	pg.	18
Padua Hospital	pg.	20
Cluj Regional Emergency Hospital	pg.	22
Tallinn Hospital	pg.	24
Bispebjerg Hospital	pg.	26
Cittadella Nursing Home	pg.	28
San Ginesio Nursing Home	pg.	30
"M. Bufalini" Hospital	pg.	32
"San Matteo" Polyclinic Hospital	pg.	34
Cisanello hospital extension	pg.	36
T.C.C. Hospital	pg.	38
Royal GreenWood Hospital	pg.	40
I.M.C. Hospital	pg.	42
Cluster Clinic	pg.	44
"Stella Maris" Hospital	pg.	46
Angola Hospital	pg.	48
Ha Long Hospital	pg.	50
Plateau State Hospital	pg.	52



Nyt OUH University Hospital, Odense, Denmark



- PISA
- MILAN
- BELGRADE
- ODENSE
- COPENHAGEN
- PARIS
- GENEVA
- TALLINN

▲ PROFILE

Creating a better reality

Architecture, landscape and technology conceived as a source of inspiration and enrichment of everyday life.

ATI Project is an international firm specialized in **integrated design** in the field of architecture and engineering, committed to the development of **sustainable buildings** with a reduced environmental impact.

The studio was established in 2011 by **Branko Zrnic** and **Luca Serri**, founders dedicated to research in bioclimatic architecture and renewable energy.

In twelve years, the **team** has grown from **2 to 350 collaborators**.

The initial outline of the office is the same that still drives its growth today: a young, visionary, technological studio that

natively uses **BIM** to promote **multidisciplinarity**, as well as **innovation** and sustainability.

The complexity and number of projects reflect the **internationality** of the studio, which today, in addition to its headquarters in **Pisa**, has offices in **Milan, Belgrade, Odense, Paris, Copenhagen, Geneva** and **Tallinn**.



14

YEARS OF CONSTANT GROWTH



25 Mln

TURNOVER IN EUROS



8

INTERNATIONAL OFFICES



1+ Million of m²

OF COMPLETED OR ONGOING PROJECTS



Construction site overview

This university hospital embodies several key concepts, combining sustainability, integration with the context, innovation, well-being and functionality in a single project.

▲ HEALTHCARE

Nyt OUH University Hospital

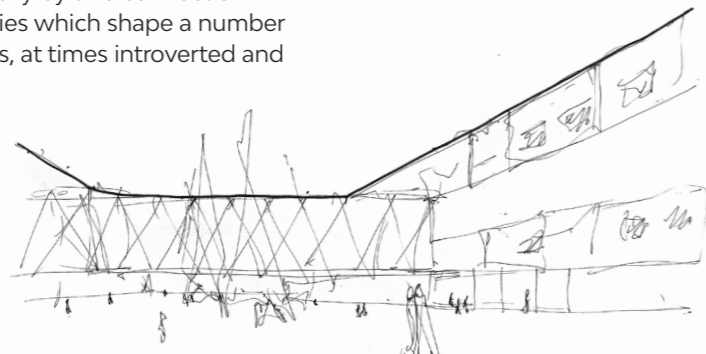
Perfect harmony between technology, context and comfort

The project for the **New Odense University Hospital** is a **complex organism, both from a technological and urban perspective**; providing a space where the relationships between patients, local community and environment weld.

The structure is composed of four blocks, hosting clinics, day hospital, offices and educational labs, crossed horizontally by two connection trajectories which shape a number of spaces, at times introverted and

immersed in the green landscapes and at times extroverted towards the city.

The **integrated design** of Nyt OUH has been developed thoroughly in **BIM technology**, performing a computerisation of the project, through which space, aesthetics and technology work together towards defining **one of the biggest hospitals in Europe.**



Location:
Odense, Denmark

Typology:
New construction

Year:
2018 - ongoing

Status:
Under construction

Dimensions:
250.000 sqm

Budget:
€ 700 mln

Client:
JV (CMB+ITINERA)

Activities:
AT - ST - MEP design,
Project Management support

Awards:
The Plan Award 2019 - Category:
Future Hospital
BIM & Digital Award 2018 - Category:
Public Buildings

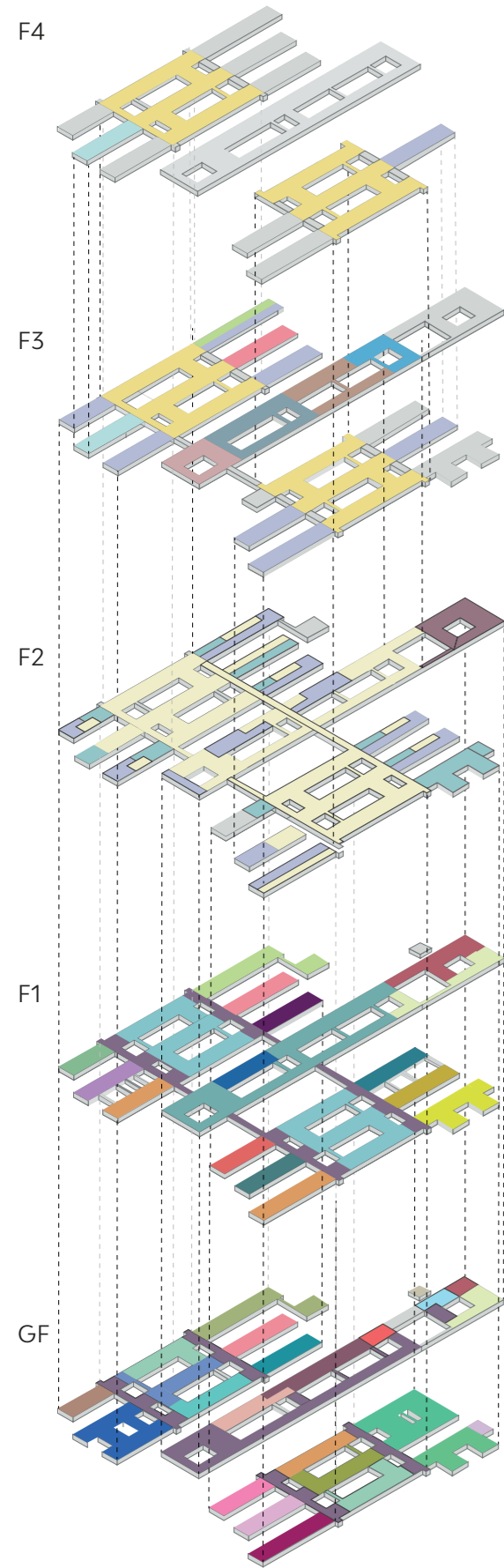
Credits:
Project Concept: C.F. Moller
Render: MTSYS
Photo: Andrea Zanchi



Bird's-eye render



Routes and connections



Functional layout

F4 - FLOOR 4

- Mixed inpatient wardintensive care
- Emergency inpatient ward
- Office and administration sect.

F3 - FLOOR 3

- Child psychiatry sect.
- Office and administration sect.
- Pediatric inpatient ward and inten. care
- Mixed inpatient wardintensive care
- Emergency inpatient ward
- Clinical genetics lab. dept.
- Clinical pathology lab. dept.
- Clinical biochemistry and pharmacology lab. dept.
- Clinical microbiology lab. dept.

F2 - FLOOR 2

- Simulation center
- Technical area
- Office and administration sect.
- Staff facilities

F1 - FLOOR 1

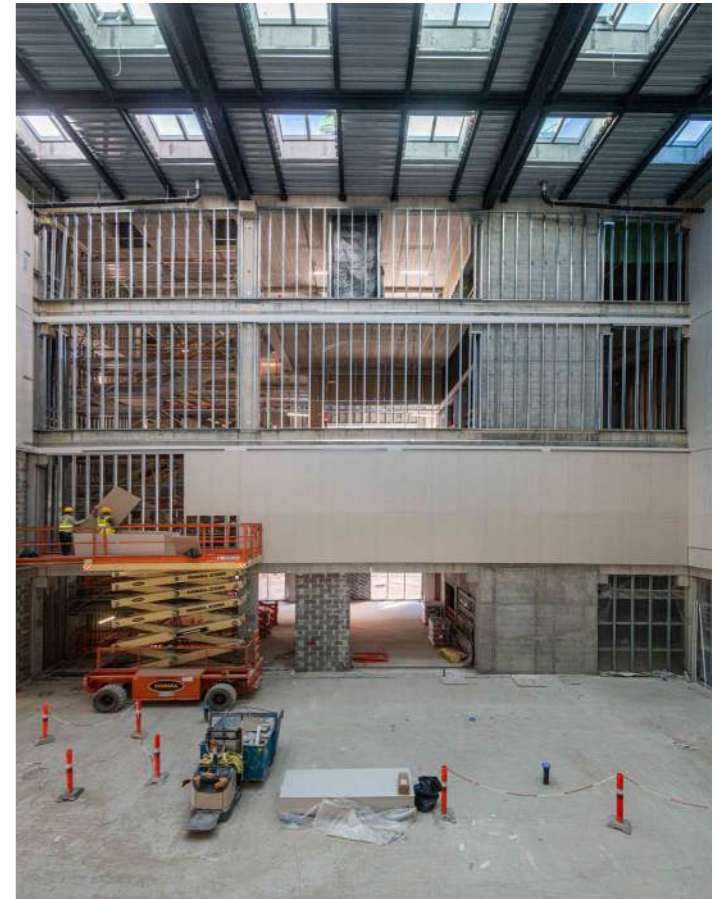
- All departments
- Clinical immunology lab. dept.
- Training center sect. (SUND)
- Intensive care sect.
- Radiology operating dept.
- Child psychiatry sect.
- Pediatric inpatient ward and inten. care
- Maternity and pregnancy inpatient ward
- Operating dept.
- Lung medicine sect.
- Emergency inpatient ward
- Mixed investigation and treatment sect.
- Hematology and rheumatology dept.
- Oncology dept.
- Pharmacy sect.
- High isolation technical area
- Otorhinolaryngology sect.

GF - GROUND FLOOR

- All departments
- Child psychiatric inpatient ward
- Pediatric inpatient ward and inten. care
- Cardiology operating dept.
- Radiology dept.
- Neonatal medicine sect.
- Day hospital sect.
- Cardiovascular medicine sect.
- Emergency room
- Clinical pathology lab. dept room
- Clinical immunology lab. dept.
- Fertility center
- Training center sect. (SUND)
- Allergology and dermatology dept.
- Nephrology and dialysis dept.
- Chapel
- Radiotherapy dept.
- Pharmacy sect.
- Endoscopy dept.
- Nuclear medicine dept.
- Mixed investigation and treatment sect.
- Ophthalmology and dentistry sect.
- Gastroenterology mixed sect.
- High isolation inpatient ward



Construction site overview



Construction site photo





Main entrance to the laboratories



Framing

In the heart of the Sienese hills, a new building that marks a step towards the renewal and improvement of care.

▲ HEALTHCARE

Siena Hospital – Ambulatories

Continuity and excellence of outpatient services

The construction of the new outpatient building is part of the Redevelopment and Development Plan of the Azienda Ospedaliero - Universitaria Senese (AOUS), which includes anti-seismic and fire prevention measures, functional and aesthetic redevelopment of existing structures and a new distribution of functions.

The building dedicated to outpatient clinics will be distributed over seven floors to maximize the use of available space and ensure an optimal division of the different activities and functions. This size has been carefully calculated to accommodate all the functions necessary for efficient provision of

services, while ensuring a comfortable environment for patients and staff.

The project as a whole includes the construction of a new car park, improving the road access to the hospital complex, adding pedestrian and cycle paths with attention to ensuring patient accessibility and differentiating external logistics flows without interfering with emergency routes.

The new structure will allow the continuity and quality of outpatient services to be maintained in a formal and well-organized context, thus contributing to the well-being of users.

Location:
Siena, Italy

Year:
2023

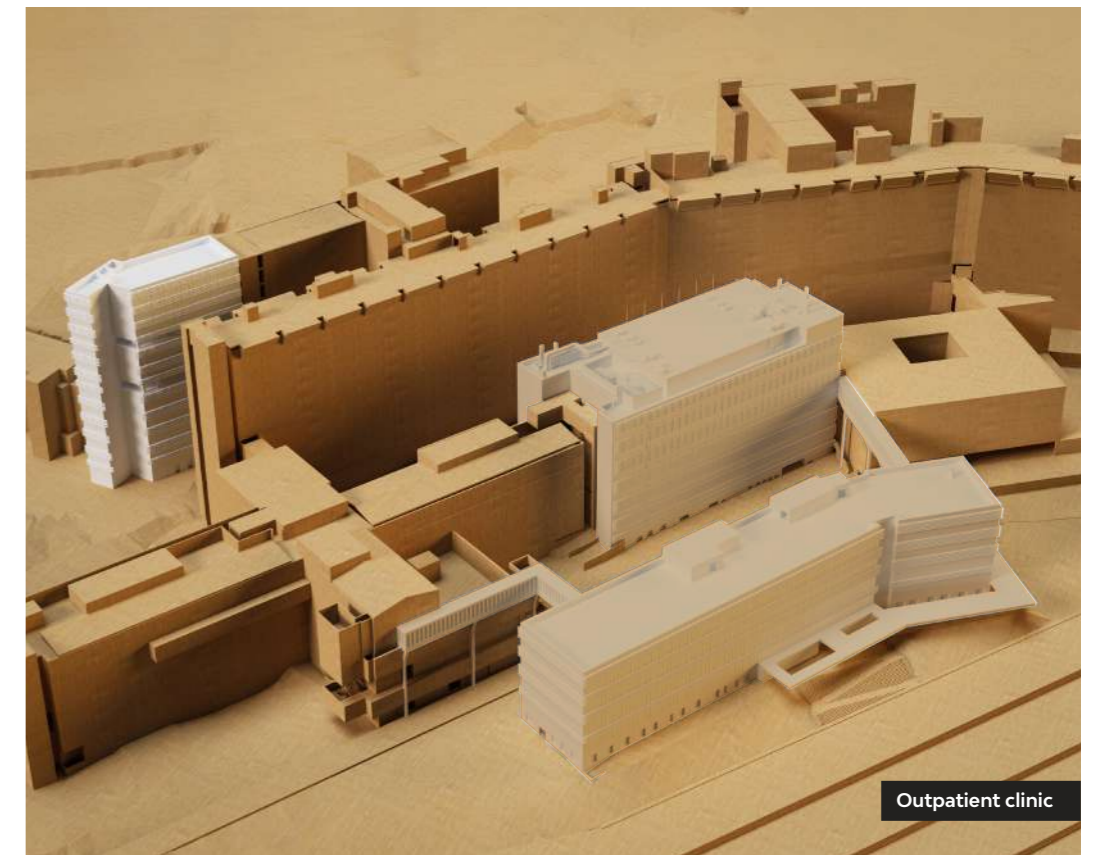
Status:
Construction in progress

Dimensions:
13.900 mq

Client:
Azienda ospedaliera -
Universitaria senese

Activities:
Progettazione AR - ST - MEP

Collaborators:
PFTE: Binini Partners



Outpatient clinic



Main entrance to the laboratories



Laboratory

An opportunity to renovate and strengthen the entire hospital complex.

▲ HEALTHCARE

Siena Hospital – Laboratories

Spaces with the highest technology and safety level

The design and construction of the new laboratory building represents a fundamental step in the enhancement of the existing hospital facilities. Harmoniously integrated with the anti-seismic structure, the building will contribute to the renovation and safety of the historic building, helping to preserve and modernize the hospital heritage of landscape value.

A significant aspect is the approach of “reconnecting” important existing areas, made possible by the construction of the new building. This not only

accelerates the implementation of the planned projects, but also improves the overall safety of the hospital.

The choice to place the most complex departments in the new structure reflects a strategic and holistic vision, aimed at optimizing the efficiency and effectiveness of hospital services.

The result is a dynamic and flexible hospital structure, designed to adapt and support the continuous evolution of the healthcare sector.

Location:
Siena, Italy

Year:
2023

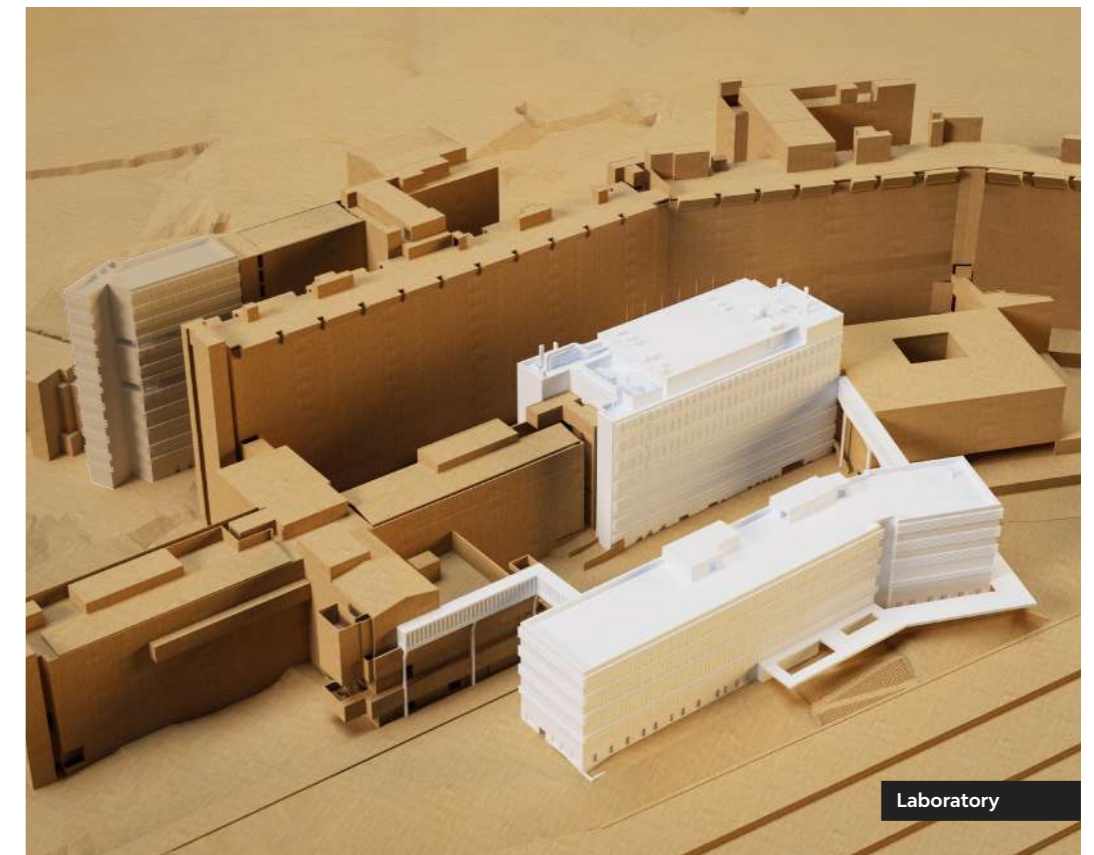
Status:
Construction in progress

Dimensions:
13.900 mq

Client:
Azienda ospedaliera -
Universitaria senese

Activities:
Progettazione AR - ST - MEP

Collaborators:
PFTE: Binini Partners



Laboratory



Main entrance



Street view

A modern and innovative hospital that embraces the future of healthcare with flexibility and dynamism

HEALTHCARE

Siena Hospital – Volano Building

Growing Spaces: Innovation and Renovation of Siena Hospital

Located in Viale Mario Bracci in Siena, “Santa Maria alle Scotte” is a hospital of national importance. From the need to make it **more efficient and modern**, the AOU (University Hospital of Siena) has provided a plan for the aesthetic and functional redevelopment and a new distribution of existing functions and structures.

Therefore, of particular significance is **the construction of a Volano building**, for which ATI Project managed the final and executive design. This building will be essential as a preparatory work for the start of the renovation of hospital spaces since will establish core spaces necessary for the subsequent implementation of renovation and modernization initiatives.

Thanks to the Volano building, which will later transform into a new building capable of hosting the most fitting functions, **it will be possible to free up significant areas for intervention, ensuring the timely execution of planned works under improved safety conditions.** This approach ensures that the hospital operations, especially those related to the most critical departments, will remain uncompromised.

The hospital complex will thus benefit from increased space, improved dimensional standards, and more modern technical solutions, obtaining a **dynamic, flexible and sustainable structure.**

Location:
Siena, Italy

Year:
2023

Status:
Construction in progress

Dimensions:
13.900 sqm

Client:
Siena University Hospital

Activities:
AR - ST - MEP Design

Credits:
Technical and economic feasibility project: Binini Partners



Aerial view



Main entrance



Street view

Where technology meets nature: the new hospital combines cutting-edge innovation with a warm, healing environment, nestled among verdant greenery.

▲ HEALTHCARE

Belgrade General Hospital

A new General Hospital that blends technology and patient-centric design

The new General Hospital aims to provide a **functional and inviting space** for both patients, their visitors, and the hospital staff. It is situated in an ideal location, in a developing and easily accessible area of New Belgrade, surrounded by greenery.

The structure consists of three levels above ground, hosting diagnostics, imaging, operational block and public areas on the ground level, followed with two floors of bedwards, and completed with a recessed level accommodating the canteen, offices, technical areas and open terraces. The design allows for ample open space and natural light to create a **warm and welcoming**

environment. The layout also includes three underground levels for parking and additional hospital functions.

One of the most notable aspects of the hospital is its **integration with the surrounding landscape.** It is designed to blend with the greenery of the surrounding wooded area, that, together with the hospital vegetation creates a **peaceful and healing atmosphere.**

Overall, the new General Hospital demonstrates the power of integrated design and technology to create a functional and welcoming space for patients and the community.

Location:
Belgrade, Serbia

Typology:
New construction

Year:
2023

Status:
Design in progress

Dimensions:
56.700 sqm

Client:
Pharmabeo

Activities:
AR - ST - MEP Design



Aerial view



Main entrance



Rehabilitation garden

Regenerative spaces for the well-being of patients and environment

▲ HEALTHCARE

Inail Motor Rehabilitation Center

Rehabilitation paths in the heart of Volterra

Demolition and reconstruction project for the new Rehabilitation Center INAIL in Volterra, aims to create a state-of-the-art facility that puts **patient's well-being** at the center of every design decision. The goal is to create a welcoming and functional environment that offers the highest quality care for patients' recovery. This will be possible through the presence of dedicated rehabilitation spaces, such as equipped gyms, as well as carefully designed outdoor spaces for rehabilitation.

A portion of the park's outdoor area will be dedicated to a parking lot for patients and visitors, facilitating access directly to the main entrance. At the back, more private area, patients will be find outdoor rehabilitation paths, including water features designed to promote the psycho-emotional rehabilitation. The exteriors will be completed with a portico leading to the view of the Volterra Belvedere.

The structure **harmoniously integrates with the surrounding environment**, in full respect of the territory. The materials used reflect, infact, the distinctive features of the location; the ground floor will be characterized by a local stone band, interspersed with large windows that allow for a panoramic view of the surroundings, while on the upper floors, openings will be screened by elegant wooden sunshades. Particular attention has been paid to existing trees, designing organic external pathways that allow their preservation.

Overall, the center will be **contemporary in its aesthetics, delicately integrated into the context, and at the forefront in terms of services for patients and energy sustainability.**

Location:
Volterra, Italy

Typology:
Demolition and reconstruction

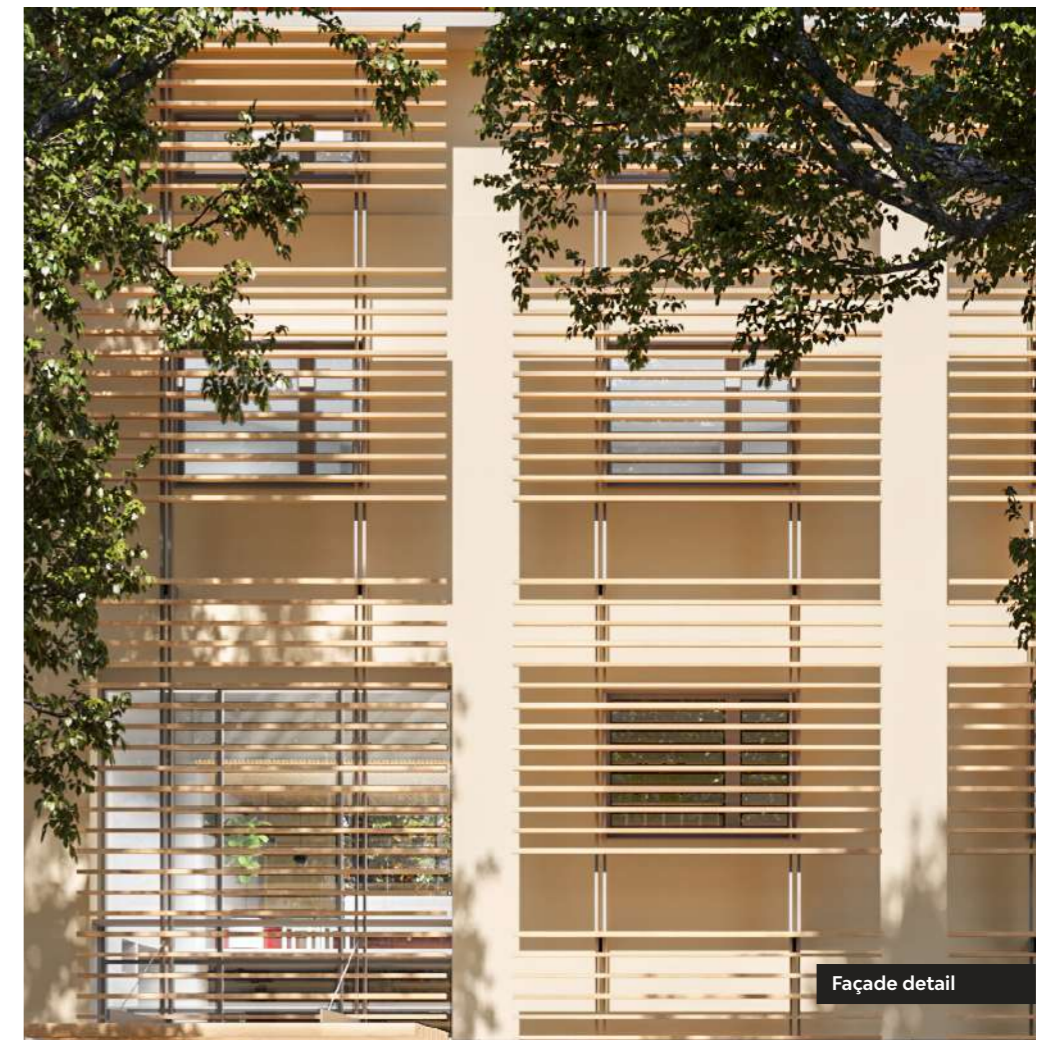
Year:
2023

Status:
Design in progress

Dimensions:
6.800 sqm

Client:
Inail

Activities:
AR - ST - MEP Design



Façade detail



Aerial view



Main entrance

Towards the hospital of the future: a hub focused on innovation, user well-being and connection with the community

HEALTHCARE

Padua Hospital

An integrated ecosystem of care, nature and technology

The new Padua Hospital will be a cutting-edge structure, carefully designed to integrate harmoniously into the surrounding context. An innovative, technological, sustainable and resilient hub, focused on the well-being of users and community.

Located in the San Lazzaro district of Padua, the hospital will be connected to the city through a network of multimodal road infrastructures.

It will be the first post-pandemic hospital in Italy, strongly interconnected with research activity and designed to be able to respond to every future need. With over 192,000 sqm 963 beds, 58 primary departments, and a 7-storey tower dedicated to research, it will offer cutting-edge care and flexible spaces, capable of responding to the trends of digitalisation and technological innovation and to the challenges caused by unexpected events and changing environmental and social conditions.

The structure integrates carefully into the landscape, preserving the site's precious wooded areas, and ample green roofs. The dialogue with nature is a common thread of the project, which permeates its every aspect and becomes an essential element in the treatment process. The building opens up towards nature and at the same time welcomes it into its internal areas and courtyards, creating green oases in which to relax, meet and rehabilitate.

Like an ecosystem of care, nature and technology, the new hospital pays maximum attention to sustainability, integrating solutions aimed at reducing energy consumption and protecting the environment, with those dedicated to optimizing internal comfort. This combination qualifies it as a nearly zero energy building, a park-hospital destined to become the new green lung for the community.

Location:
Padua, Italy

Typology:
New construction

Year:
2022 - ongoing

Status:
Design in progress

Dimensions:
192.000 mq

Client:
Padua University Hospital

Activities:
AR - ST - MEP, Infrastructures and Landscape design

Collaborators:
Politecnica Ingegneria ed Architettura (JV Leader) - Coopprogetti - Techint



Main street



Internal courtyard



Main entrance



Street view

A hospital center aimed at improving the efficiency of emergency care that guarantees patients access to high quality healthcare services

▲ HEALTHCARE

Cluj Regional Emergency Hospital

Enhancing emergency care through a cutting-edge healthcare facility

The new Cluj Regional Hospital will function as a **high-level emergency hospital**, with all the necessary advanced medical equipment and technologies.

The hospital structure will have 849

beds for inpatient care, 19 operating rooms, 60 emergency beds, 70 rooms for outpatient care, 69 rooms dedicated to diagnostic and treatment services and a built-up area of about 150.000 sqm.

Location:
Cluj, Romania

Typology:
New construction

Year:
2022 - ongoing

Status:
Design in progress

Dimensions:
150.000 sqm

Collaborators:
3TI Progetti (JV Leader), Aduro Impex

Client:
Ministerul Sanatatii

Activities:
AR - ST - MEP Design



Aerial view



Main entrance



Side view

An avant-garde and highly functional complex, in which the technological envelope expresses sensitivity towards the surrounding area, becoming a distinctive landscape element.

▲ HEALTHCARE

Tallinn Hospital

Architecture dedicated to care. A hospital connected to the surrounding landscape

The project of the **new Tallinn Hospital** is developed on the limestone hill of Maarjamäe, in the natural setting of the Estonian capital's bay.

Modern, technological, and sustainable, the complex harmonises with the most contemporary requirements of hospital facilities and is divided into **two volumes**, which house the outpatient and treatment functions and move along the longitudinal axis of the volumetric matrix, coinciding with the main covered corridor.

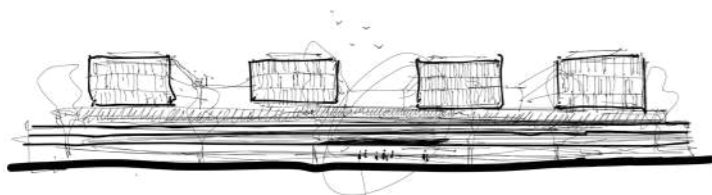
At the top of the building are the **wards**, which emphasise the perimeter of the

volume and maximise the contribution of natural light.

Hospital areas are interconnected by transverse passages, following free directions, alternating with **elevated gardens, informal meeting spaces** and **views** of the **park**, the **sea**, and the **city**, participating in the psychophysical well-being of staff and users.

The **envelope** dialogues with its surroundings and moves in overlapping registers through slight folds that intercept the light, reflecting it in a play of reverberations, capable of dematerialising the mass of the base volume.

Outside, the **green campus** reflects the architectural textures of the building, becoming part of the landscape.



Location:
Tallinn, Estonia

Typology:
New construction

Year:
2021 - 2024

Dimensions:
Approx. 216.000 sqm

Budget:
€ 520 mln
€ 450 mln Works
€ 70 mln Medical equipment

Client:
Tallinn Social Welfare and Health Care Department

Activities:
AR - ST - MEP and Landscape design

Collaborators:
3TI Progetti

Consultants:
Esplan



Entrance



Atrium



Main entrance



Garden view

A perfect combination of quality and sustainability. The added value lies in the concerted and shared effort of the various professionals involved.

▲ HEALTHCARE

Bispebjerg Hospital

A reference point for the territory and healthcare. The new Copenhagen hospital

The project for the **new Bispebjerg hospital** represents a key intervention within the vision proposed by the Capital Region of Denmark for the development of health care services in the area.

The architectural complex develops in an area of **approximately 77.500 sqm**, within which **six pavilions** host a dense and widely articulated functional program.

There are three key departments: **emergency, operation and radiology**. These are adjoined by departments with the most contact with patients, such as pediatrics and woman & child. Operating rooms, laboratories, connection tunnels and services complete the **programmatic layout**,

making the new facility a **state-of-the-art hub** for the entire region.

In the new hospital, the design disciplines intersect forming a technological unicum with a decisive language, that is at the same time perfectly integrated from a landscape and environmental point of view.

It is an intervention of great logistical and institutional importance; and was made possible thanks to the transversal nature of the **BIM methodology**, which allows to articulate each phase of the life cycle of the new building in compliance with the purposes of the project vision and with a careful control of construction times and costs.

Location:
Copenhagen, Denmark

Typology:
New construction

Year:
2020 - 2024

Status:
Under construction

Dimensions:
Approx. 89.000 sqm

Budget:
€ 230 mln

Client:
Rizzani De Eccher

Activities:
AR - ST - MEP, Infrastructure and Landscape design

Credits:
Preliminary design: Khr Arkitekter A/S, Arup, Urbanlab Nordic, Eyp

Consultants:
Sweco - Creo Arkitekter



Pedestrian access



Entrance



Main access

A complex renovation of a historic building. The use of BIM allowed the perfect integration of all disciplines and the overall control of the different phases of work.

HEALTHCARE

Cittadella Nursing Home

A functional health facility in dialogue with the city

The project concerns the **restoration** of the “Ex Pensionato” building, which is part of the **Social Welfare Complex** in **Cittadella**, and in particular:

- the **demolition** of some existing buildings;
- the **reconstruction** of a new above-ground building, the raising of the “Edificio Cerniera” building, which is currently located next to the “ex Pensionato”;
- the **renovation** and **reuse** of the small building in front of Via Casa di Ricovero, called Casetta, where technical spaces and service areas are currently located.

The project had to deal with the city context, in order to improve its **integration in the historic urban fabric**, and the relationship with the existing infrastructures and services, while maintaining a very **high functional and technological standard** necessary for the specific destination.

Location:
Cittadella, Italy

Typology:
Renovation and extension

Year:
2020 - 2021

Status:
Under construction

Dimensions:
5.200 sqm

Budget:
€ 5.1 mln

Client:
C.R.A. Cittadella

Activities:
AR - ST - MEP design



Terrace



Aerial view



Courtyard

An integrated design developed in a BIM environment for a prestigious complex under historical constraints.

▲ HEALTHCARE

San Ginesio Nursing Home

Enhancing heritage by adapting functions to today's needs

The project concerns the adaptation of the "San Ginesio Nursing Home" damaged by the 2016 earthquake. In particular, the project carries out the **structural consolidation** of two corps located within the lot between Via Roma, the castle walls and the church of Santa Maria in Vepretis near Porta Picena.

As part of these works, a **new functional layout of the buildings** has been redefined, also considering the close connection of the project area to the historical urban fabric.

Given the existing **historical constraints** on the building, the **relationship/dialogue with the local authority** was of fundamental importance.

The project is developed with the use of BIM technology, an indispensable tool for **integrated design** and overall control of all phases of the works.

Location:
San Ginesio, Italy

Typology:
Renovation

Year:
2020 - ongoing

Status:
Design in progress

Dimensions:
3.900 sqm

Client:
Marche Region

Budget:
€ 6.1 mln

Activities:
AR - ST - MEP design



Entrance area



Indoor view

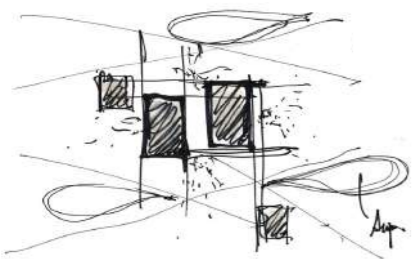


Main entrance



Aerial view

A functional healthcare facility that is sensitive to patients' needs. Living in a privileged relationship with nature.



HEALTHCARE

"M. Bufalini" Hospital

Volumes and relationships define a technological organism at the service of health

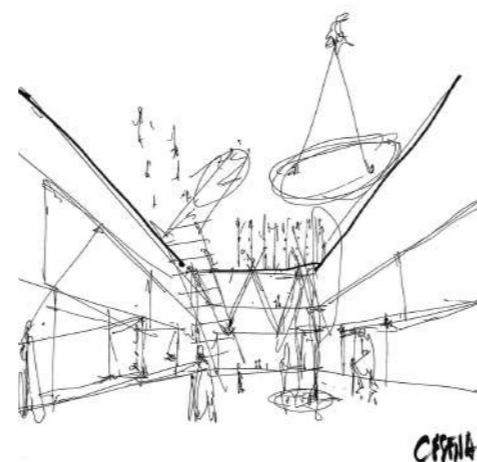
The project proposal for the **new Hospital in Cesena** shifts the idea of a space for healthcare to that of a public open infrastructure.

The urban grid defines the complex of volumes and activities, amongst which rises the indoor entrance gallery, a link between the hospital and the outside community.

A design strategy with a strong environmental impact that positively affects the wellbeing of patients, turning architecture into an additional tool for the therapeutic process.

The vast **rooftop garden** connects the architectural masses, integrating greenery and visiting wards areas:

nature, metaphor for healing, becomes the bonding element in a context oriented towards treatment and care.



Location:
Cesena, Italy

Typology:
New construction

Year:
2019

Status:
Competition proposal

Dimensions:
75.000 sqm

Budget:
€ 130 mln

Client:
U.S.L (Local Health Unit) Romagna

Activities:
AR - ST - MEP and Landscape design



Auditorium



Main hall



Existing and new facade elements integration



Patient room

A project that weaves a dense dialogue between past and future. Greenery plays a crucial role, making the atmosphere welcoming and functional.

▲ HEALTHCARE

"San Matteo" Polyclinic Hospital

A design thread linking tradition and functionality

The project for the renewal of the San Matteo Polyclinic Hospital in Pavia, aims to bring together, in a single solution, the historical-traditional qualities of the campus with the newest technologically advanced functionalities.

Within such dialogue, the vegetation takes a key role, moulding a safe and pleasant space for patients and staff workers.

The use of wood in the interiors creates a warm atmosphere that is found in all the recovery rooms and first aid spaces.

The use of colour has been developed as a way-finding device. The different disciplines enrolled, in addition to the complex plant and structural systems, have made it necessary to develop a BIM model, a tool for quality control and project management at the same time.

Location:
Pavia, Italy

Typology:
Renovation

Year:
2016

Status:
Competition proposal

Dimensions:
16.200 sqm

Budget:
€ 23.1 mln

Client:
Paolo Beltrami, Sicrea Group

Activities:
AR - ST - MEP design



Acceptance area



Polyclinic



Main entrance



Side view

The project interprets the functionality of the facility by mediating design and hospitality.

▲ HEALTHCARE

Cisanello hospital extension

Functionality and dynamism for an innovative hospital

The new reception hall and the waiting room for the **Endocrinology** section in the **Hospital Center of Cisanello**, represent a step towards the humanisation of healthcare assistance.

Well-being is the key focus for this design; the new waiting room satisfies the strongest **privacy regulations** and meets the highest **psychological and indoor comfort needs**.

The **wooden structure** made it possible to reduce construction duration, whilst the large curtain walls create a pleasant

space, bringing natural light into the building and determining a continuous relation with the exterior.

A careful use of colour completes the design of the interior spaces and is used as a device for wayfinding as well as an aesthetic choice.

Location:
Pisa, Italy

Typology:
New construction
(extension)

Year:
2015

Status:
Completed

Dimensions:
1.050 sqm

Budget:
€ 1.3 mln

Client:
CLC Soc. Coop.

Activities:
AR - ST - MEP design

Credits:
Photo: Andrea Zanchi



Reception area / Hallway



Main elevation and entrance



Aerial view

The design of this hospital building revolves around the need to maximise natural light. For comfortable and welcoming environments.

HEALTHCARE

T.C.C. Hospital

Dynamic architecture for efficient and bright spaces

Cubic and compact volumes are some of the most common shapes in hospital architecture, universally applicable to any urban scenario.

However, the intrinsic volumetric characteristics of this type of solution entail severe difficulties when it comes to bringing natural light in the building or integrating systems and bioclimatic logics.

Transforming these limits into key assets of the design, the concept for the Thai Cure Center Hospital envisages a single glass volume that hosts the recovery rooms, to which are anchored a number of volumes of different shapes and sizes

that host the remaining sections of the program.

A typological and formal study that shapes a dynamic architecture, made of simple and efficient geometries.

Location:
Thailand

Typology:
New construction

Year:
2015

Status:
Design completed

Dimensions:
34.000 sqm

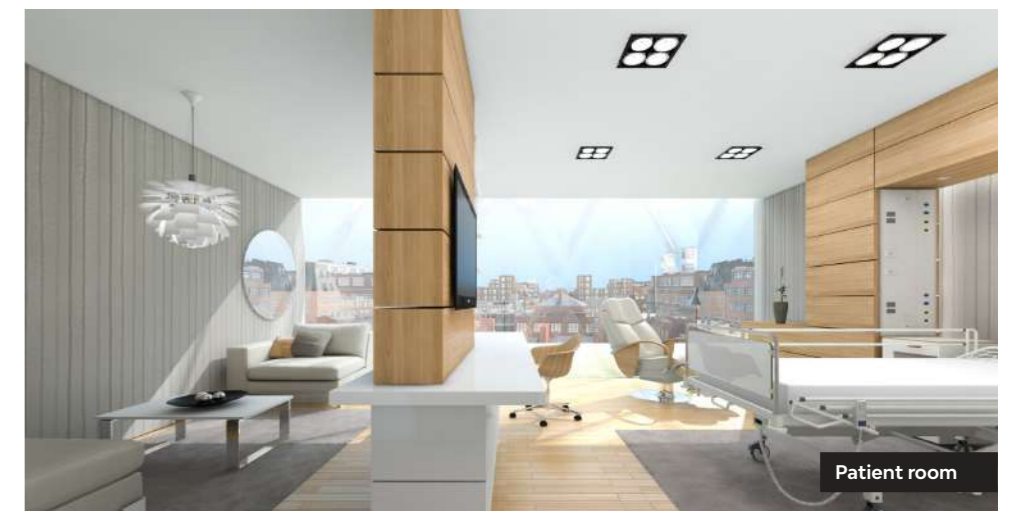
Budget:
€ 85 mln

Client:
Rheinmetall

Activities:
AR design



Waiting / Common area



Patient room



Main elevation and entrance



Aerial view

A hospital design that focuses on well-being, relationship with the context and cutting-edge integrated design.

HEALTHCARE

Royal Greenwood Hospital

A hospital inspired by local natural environment in Cambodia

GreenWood Hospital is part of the large program for the renewal of hospital facilities in the Asian region, conceived through methods of innovative design and integrated design.

The building recalls the naturalistic local context, with a special attention to a bioclimatic order.

The functional layout develops on two levels. On the first level are hosted the surgery, therapy and diagnose activities, on the second level is the recovery section.

The envelope mirrors the layout, adapting strategically to the indoor functions with the use of both stylistic and technological solutions.

The disposition of the interior courtyards guarantees natural lighting in all locations, improving the level of sustainability and comfort within the hospital.

The use of renewable resources and the use of natural ventilation make this building a symbol of energy efficiency.

Location:
Cambodia

Typology:
New construction

Year:
2015

Status:
Design completed

Dimensions:
30.000 sqm

Budget:
€ 75 mln

Client:
Rheinmetall

Activities:
AR design



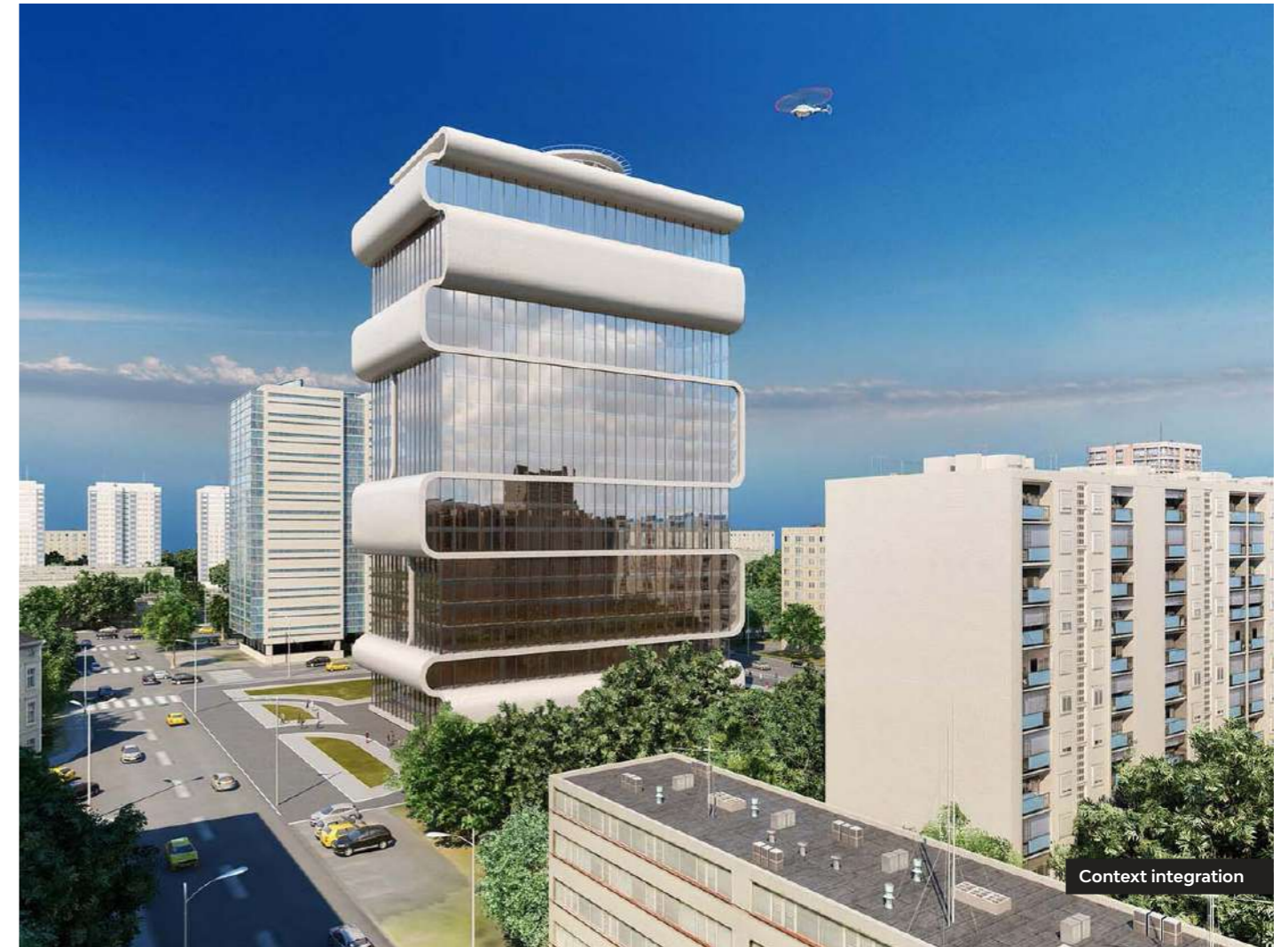
Patient room



Canteen / Common area



Aerial view



Context integration

A reusable model, designed to bring an innovative hospital environment even in underdeveloped assistencial areas.

A HEALTHCARE

I.M.C. Hospital

A hospital building that redefines the standards of comfort

Designed for a developing area, the International Medical Center in Cambodia is a project that engages the theme of hospital architecture by organising its activities in a vertical structure: a system of folding surfaces that bend in space and enclose the complex program.

This strategy defines functionally independent units and therefore provides a better energy and environmental strategy.

The architectural movement of the partitions has been designed accordingly to the building's orientation, integrating the concept of space with bioclimatic strategies.

The outcome is a sinuous, replicable and sustainable architecture, a model of quality that sets new standards in a region of underdeveloped healthcare assistance.

Location:
Cambodia

Typology:
New construction

Year:
2015

Status:
Design completed

Dimensions:
27.000 sqm

Budget:
€ 67.5 mln

Client:
Rheinmetall

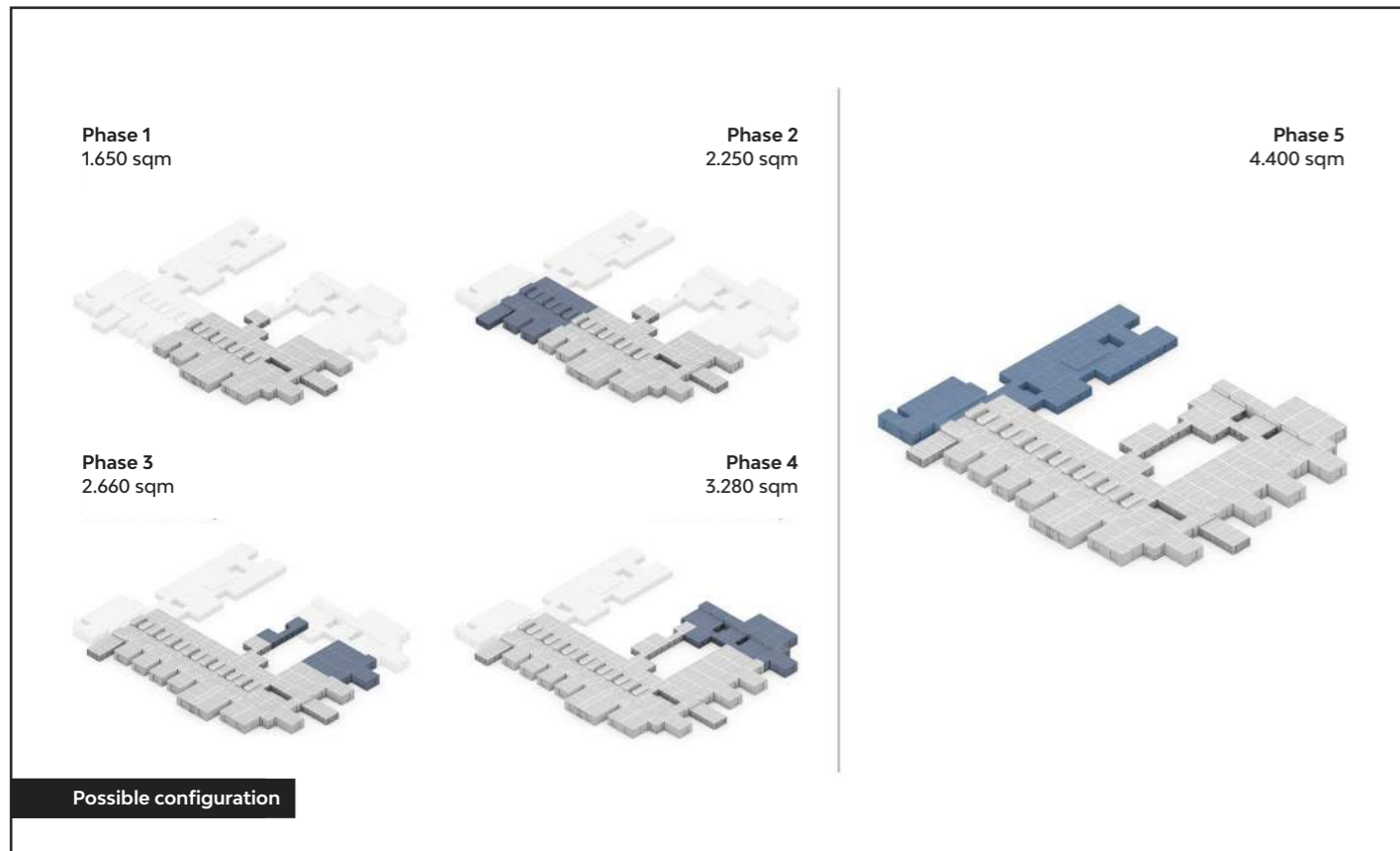
Activities:
AR design



Waiting / Common area



Patient room



A standardised system for the construction of low-cost and highly adaptable modular healthcare structures.

HEALTHCARE

Cluster Clinic

Humanitarian design. Modular, emergency-proof

The concept of the **Cluster Clinic** provides a concrete solution for those contexts without a complete and branched territorial healthcare system, and are therefore unable to cope with epidemiological emergencies or environmental disasters.

Costs and efficiency, therefore, represent fundamental parameters and require increasingly fast and flexible calculation and forecasting procedures.

Core element of the design is the **20 feet container**. It can be set up with medical equipment or can be used for the transportation of construction elements and later set up as an element for connection and circulation within the aid-district.

Six more units can be added to the **core module**, these come in different dimensions and are combined through an **assembly strategy** that allows to shape different configurations in response to the users' needs. Through the assembly of these units it is possible to set up repeatable operating clusters, with fixed costs, dimensions and quantities.

Not a simple project strategy, but an example of **humanitarian design** that, once again, demonstrates how the simplest technology gives us the tools to rethink complex modern hospital architecture with **creativity** and extreme **practicality**.

Location:
Emergent territories

Typology:
Emergency modular hospital / New construction

Year:
2015 - 2020

Status:
Design completed

Dimensions:
Variable

Budget:
Variable

Client:
Rheinmetall

Activities:
AR - ST - MEP design



Waiting room / Common area



Clinic



Inner courtyard



Site plan

An environmentally conscious project built around the need to maximise the potential of research in the clinical field by encouraging dialogue and multidisciplinary.

▲ HEALTHCARE

"Stella Maris" Hospital

**The periphery at the centre.
An urban catalyst for care and research**

The design of the new hospital was inspired by the principle of assistance and charity, the same pillar that is at the heart of the Foundation. The functional layout of the new centre was designed to maximize the potential of clinical research by creating an environment in which doctors and operators from different disciplines and institutions can collaborate in harmony with each other.

The new hospital stands next to the Cisanello park and develops as its natural extension, while carrying the opportunities and responsibilities that come with redevelopment in the urban periphery. The movement of the roof, which naturally rises upwards in continuity with the surrounding area, expresses a direct link between the human and spiritual conditions. The distribution is structured around a series

of courtyards that recall the layout of a small citadel. This strategy also allows a better natural lighting of the rooms and visual continuity with the surrounding nature.

From a typological and functional point of view, the Stella Maris complex combines the advantages of the pavilion plan with that of the monoblock type, improving the management quality of the layout and optimizing flows and departments' distribution in the three floors of the architectural volume.

A project that is attentive to the environment in a broad sense and which aims to be an example of sustainability through the pursuit of LEED environmental certification criteria.

Location:
Pisa, Italy

Typology:
New construction

Year:
2015

Status:
Competition proposal

Dimensions:
12.000 sqm

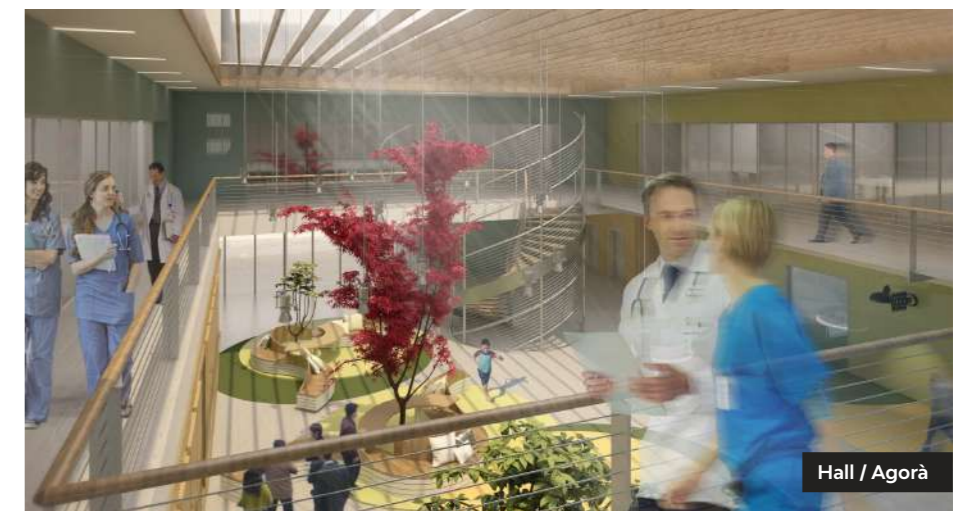
Budget:
€ 11.5 mln

Client:
Fondazione Stella Maris - IRCCS

Activities:
AR design



Aerial view / Main entrance



Hall / Agorà



Main entrance



Front elevation



Garden and parking area

The project combines compositional simplicity and technical complexity in a solution with a determined character.

▲ HEALTHCARE

Angola Hospital

Simple lines for an articulated hospital complex

The **Angola Hospital Campus** aims to be a **reference point** for **hospital architecture** and healthcare centres in the whole country.

The intervention features a series of volumes that integrate architectural solutions and technological ones in a **single image**.

The presence of vast **green areas** mitigates the high temperatures typical of this geographical site.

Location:
Angola

Typology:
New construction

Year:
2010

Status:
Design completed

Dimensions:
7.000 sqm

Budget:
€ 14 mln

Client:
Hospital Engineering

Activities:
AR - ST - MEP design



Secondary access



Main entrance



Secondary access

Moving volumes, a double-skin facade to mitigate sunlight and relaxing green spaces. This is the new Vietnamese hospital.

▲ HEALTHCARE

Ha Long Hospital

Contemporary dynamics and bioclimatic approach

The **Ha Long Hospital** represents the result of a **design research** that ties landscape, bioclimatic strategies and contemporary architecture.

On the outside, the building reveals its indoor functional layout through the differentiated treatment of its envelope that features a double skin that controls sunlight and heat.

The movement of the volumes lends a sense of dynamism to the whole composition, finding its strongest

display in the **auditorium** unit at the front of the campus.

The study of the **green areas** completes the design proposal, determining an architecture with a strong expressive character.

Location:
Ha Long, Vietnam

Typology:
New construction

Year:
2010

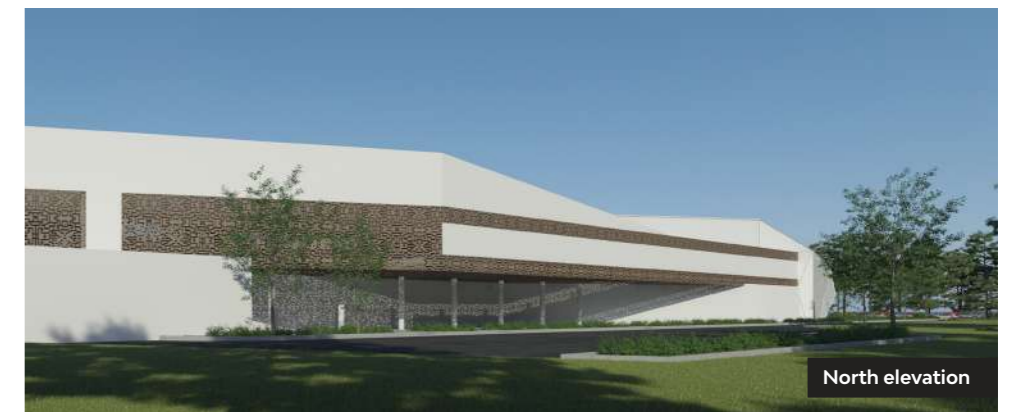
Status:
Design completed

Dimensions:
25.000 sqm

Budget:
€ 50 mln

Client:
Hospital Engineering

Activities:
AR - ST - MEP design



North elevation



South elevation



Main entrance



Aerial view

An example of sustainable, locally rooted architecture with clear social and humanitarian objectives.

▲ HEALTHCARE

Plateau State Hospital

A complex project with multidisciplinary impetus

The project for the **Plateau Specialist Hospital** is a **complex** intervention with strong **humanitarian and social ambitions**.

The development of the concept has required a **multidisciplinary and integrated approach** from our design team.

Nature is the keystone element of the design proposal, featuring different volumes that are divided accordingly to their functions.

The project clearly recalls the local construction styles and techniques, while successfully engaging a new contemporary approach.

An accurate **bioclimatic study** of the indoor and outdoor spaces make this design an example for **sustainable architecture**, focal aspect of a building devoted to healthcare.

LOCATION:
Jos, Plateau State, Nigeria

Typology:
New construction

Year:
2009

Status:
Design completed

Dimensions:
18.000 sqm

Budget:
€ 36 mln

Client:
Hospital Engineering

Activities:
AR - ST - MEP design



Internal connections

Certifications

					
<p>BIM UNI PDR 74:2019 CERTIFIED COMPANY</p>	<p>ISO 9001:2015 CERTIFIED COMPANY</p>	<p>ISO 14001:2015 CERTIFIED COMPANY</p>	<p>ISO 45001:2018 CERTIFIED COMPANY</p>	<p>UNI PDR 125:2022 CERTIFIED COMPANY</p>	<p>SA 8000:2014 CERTIFIED COMPANY</p>

					
<p>ASSOCIATE OF CONFINDUSTRIA ASSOIMMOBILIARE</p>	<p>MEMBER OF OICE</p>	<p>MEMBER OF EFCA</p>	<p>MEMBER OF CNETO CENTRO NAZIONALE EDILIZIA E TECNICA OSPEDALIERA</p>	<p>MEMBER OF GREEN BUILDING COUNCIL ITALIA</p>	<p>LEGAMBIENTE IDENTITY CARD</p>

		
<p>BIM QUALITY ENVIRONMENT POLICY</p>	<p>SOCIAL RESPONSABILITY POLICY</p>	<p>GENDER EQUALITY POLICY</p>



ATI | Project

CREATING A BETTER REALITY

PISA
MILAN
BELGRADE
ODENSE
COPENHAGEN
PARIS
GENEVA
TALLINN