

^
P O R T F O L I O
SPORT



C R E A T I N G A B E T T E R R E A L I T Y

ATI | Project

Table of contents

Profile pg. 5

Works

- Franchi Stadium and Campo di Marte pg. 6
- Perignano Sports Center pg. 10
- Multifunctional Sports Hall pg. 12
- “Matteotti” Gym pg. 14
- “A. Trevigi” Gym pg. 16
- Rugby Arena pg. 18
- Stadium Arena pg. 20



Rugny Arena, Pisa, Italy

- PISA
- MILAN
- BELGRADE
- ODENSE
- COPENHAGEN
- PARIS
- GENEVA
- TALLINN

▲ PROFILE

Creating a better reality

Architecture and technology conceived as a source of inspiration and enrichment of everyday life

ATI Project is an international firm specialized in **integrated design** in the field of architecture and engineering, committed to the development of **sustainable buildings** with a reduced environmental impact.

The studio was established in 2011 by **Branko Zrnic** and **Luca Serri**, founders dedicated to research in bioclimatic architecture and renewable energy.

In just over a decade, the **team** has grown from **2 to 350 collaborators**.

The initial outline of the office is the same that still drives its growth today: a young, visionary, technological studio that



natively uses BIM to promote **multidisciplinarity**, as well as **innovation** and **sustainability**.

The complexity and number of projects reflect the **internationality** of the studio, which today, in addition to its headquarters in **Pisa**, has offices in **Milan, Belgrade, Odense, Paris, Copenhagen, Geneva** and **Tallinn**.



14

YEARS OF CONSTANT GROWTH



25 Mln

TURNOVER IN EUROS



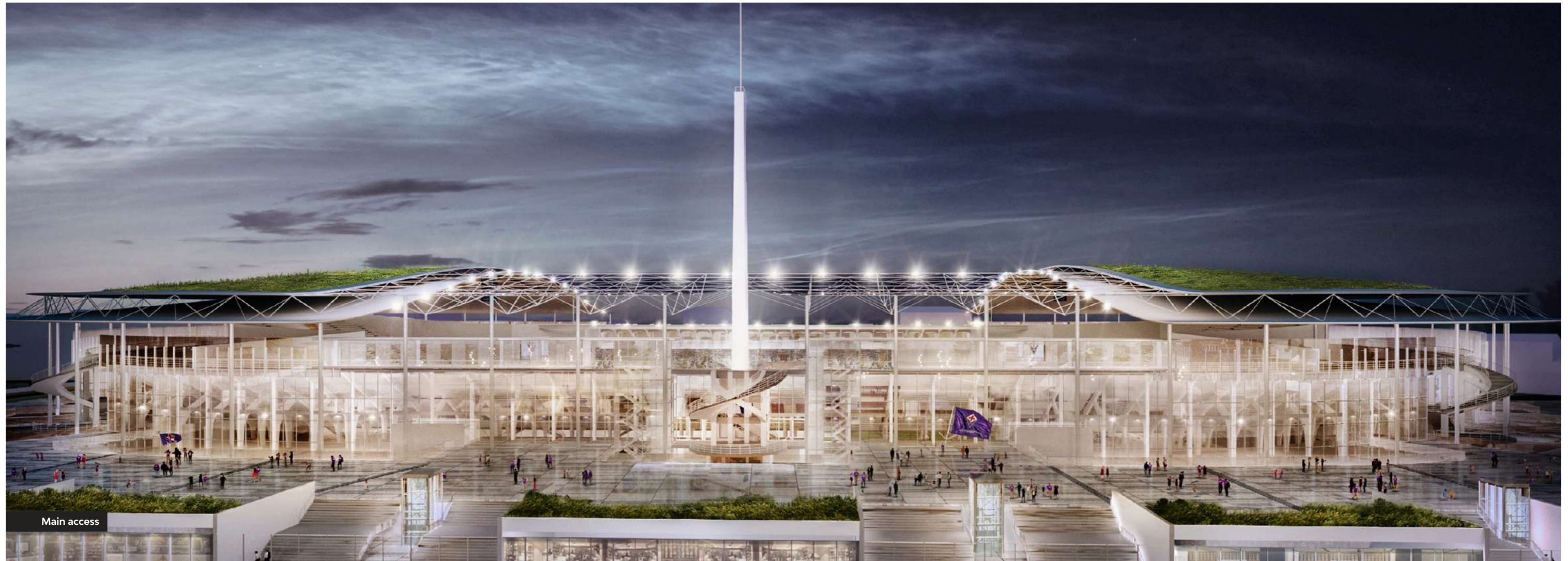
8

INTERNATIONAL OFFICES



1+ Million of m²

OF COMPLETED OR ONGOING PROJECTS



The Franchi Stadium enters the contemporary world with a solution that integrates and enhances its historical dimension. A far-reaching intervention that also involves Campo di Marte according to a planning oriented towards the territory and sustainability.

SPORT, URBAN

Franchi Stadium and Campo di Marte

Architecture and sport become a unique synthesis of the spectator's experience

A new modern, sustainable and safe stadium, compliant with FIGC and UEFA requirements with commercial spaces accessible 24/7.

The design is generated from the enhancement of the incredible existing structure of Pier Luigi Nervi, embedded in an Urban Sport Park.

An overall intervention aimed at the improvement of quality of life within the neighborhood and in the entire city, revitalized by a brand-new identity and

a modern permeability between public and private spaces.

These have been the focus points of our proposal for the new Stadio Franchi and the masterplan for Campo di Marte northern area.

Location:
Florence, Italy

Typology:
Requalification

Year:
2021

Stato:
Competition proposal

Dimensions:
Stadium: 40.000 spectators
Masterplan: 25 ha

Budget:
€ 170 mln

Activities:
AR design

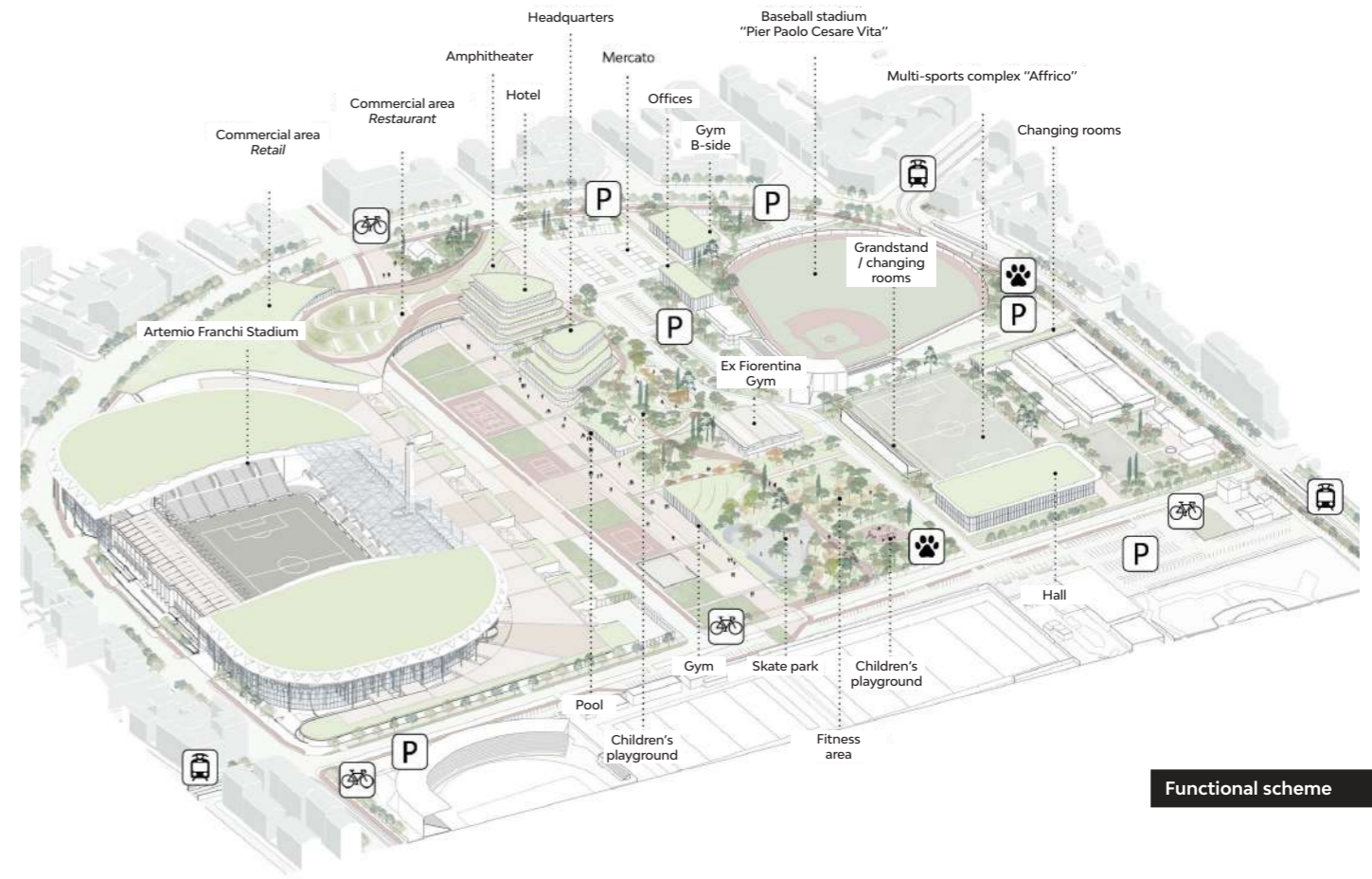




Promenade



Overview



Functional scheme



Spaces for sport become a place for the daily experience of a community.

A SPORT

Perignano Sports Center

Sports architecture. The new dimension of the Frates ASD Sports Center in Perignano

The adaptation project of the Frates Perignano ASD Sports Center is an intervention articulated on the needs of the community which, starting from the pre-existing ones, responds to the prospect of developing the sports area according to the standards of the football D series and the youth sector.

The architecture interprets the different synergies of a strongly characterized territory and returns, through an integrated process, spaces and structures that characterize the peripheral area as functional and organic to the development of the urban and social fabric. The expansion of the stands of the "Mauro Matteoli" sports facility is accompanied by the demolition and reconstruction of the new cultural center, part of the surface of which is intended for accessory functions such as the changing rooms serving the main field. The overall

expansion of the center also counts on the consolidation of the youth sector and the football school, with two fields respectively for eleven and seven, and related changing rooms.

The tennis centre, an integral part of the complex and engine of the diversification offered to the audience of users, has also been expanded and renovated according to the highest standards of sustainability and energy efficiency.

The Frates Perignano ASD Sports Center is such a place that interprets the contemporary concept of sporting experience. Its functionality is in fact extended and transversal and not confined to times and activities exclusively linked to the sporting event, thus becoming a structure with its own urban dimension, recognizable and recognized by the community.

Location:
Perignano, Italy

Typology:
Sport

Year:
2021

Status:
Design completed

Budget:
4 mln

Client:
Municipality of Casciana Terme - Lari

Activities:
AR - ST - MEP Design





Main access



Secondary entrance

From a gymnasium to a sports hall open to the community, a flexible and modern place.

SPORT

Multifunctional Sports Hall

Synthetic lines for functional and adaptable interiors

The project involves **replacing the current school gymnasium** with a modern and functional **sports hall**, which can be used both by the adjacent school and for training sessions and matches of local sports clubs.

The new hall was designed according to the current CONI regulations and will be able to accommodate up to **400 spectators**.

For better management of the facility, **a movable partition sheet** allows the playing area to be divided into two volleyball courts, so that **several classes or teams can be accommodated at the same time** during training.

The **public area** is equipped with a

refreshment area from which one can also access a large outdoor solarium with a view of the playing field through large windows that allow to follow the sporting activities also from outside

The envelope is characterised by a succession of opaque and transparent portions of regular shapes, for a **simple but recognisable language**.

Location:
Nembro, Italy

Typology:
New construction

Year:
2020 - 2021

Status:
Under construction

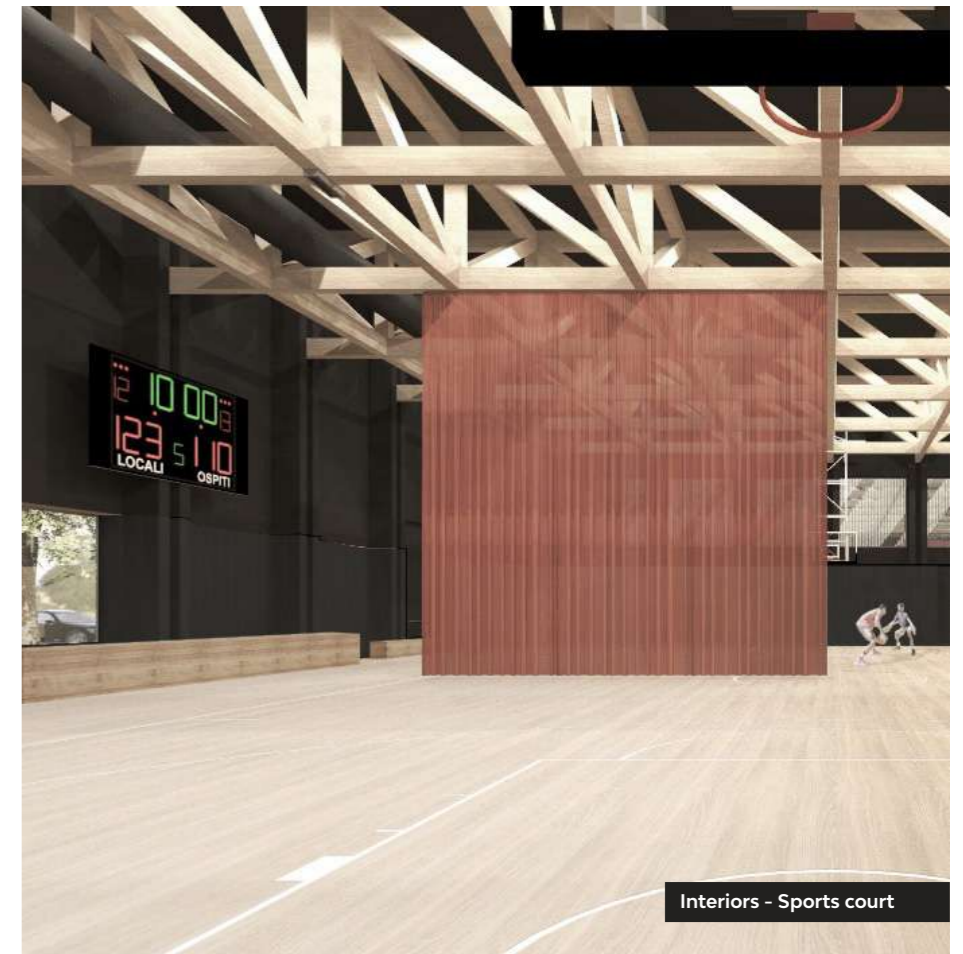
Dimensions:
2.000 sqm

Budget:
€ 2 mln

Client:
Municipality of Nembro

Activities:
AR - ST - MEP design

Collaborators:
Didonè Comacchio Architects



Interiors - Sports court



Interiors - Sports court

The architectural organism constitutes the new fulcrum around which the various functions revolve.

A SPORT

"Matteotti" Gym

Sport and education. A welcoming and functional gym

The new gym of the Matteotti Institute in Pisa is a project that pursues balance, harmony with the context and order in its layout.

The **multifunctional court**, designed in compliance with CONI standards, obtains a central position in the functional layout: a unique and flexible space, featuring an exposed wooden structure that innervates the space and gives back a warm and welcoming ambiance for athletes and spectators.

The **facade** facing the institute is outlined by a linear opening that develops along the entire length of the elevation, creating a dynamic combination of light and shadows that characterizes the interior space.

The simplicity of the volumes is reinterpreted in the design of the open areas, in which **nature** is the subject and frame of the sports experience.

Location:
Pisa, Italy

Typology:
New construction

Year:
2020 - ongoing

Status:
Under construction

Dimensions:
2.000 sqm

Budget:
€ 3 mln

Client:
Province of Pisa

Activities:
AR - ST - MEP design

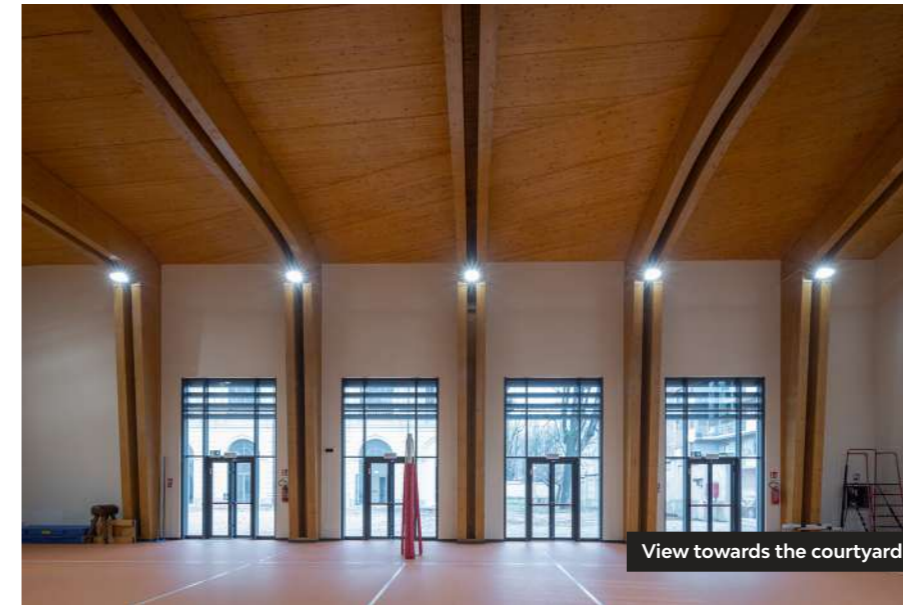
Collaborators:
Studio Masiello strutture,
Eng. Stefano Liberatori



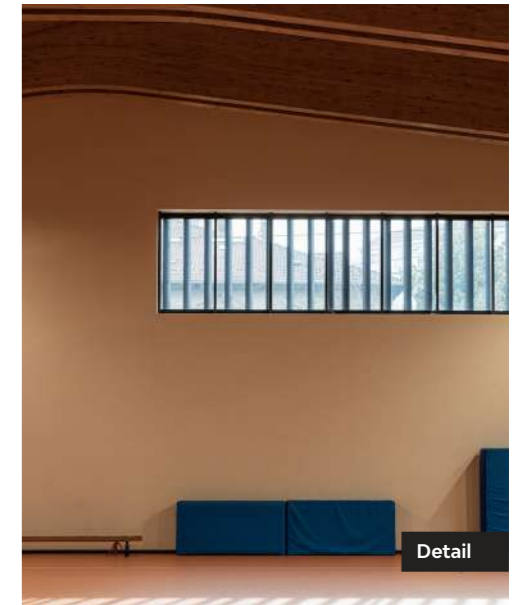
Relation with "Matteotti" Institute



Sports court



View towards the courtyard



Detail



Street view



Entrance

The design proposal for the gym in Casale Monferrato is an example of eco-sustainability and eco-compatibility in a historical context.

SPORT

"A. Trevigi" Gym

Crossed dialogues. Between historical building and energy efficiency

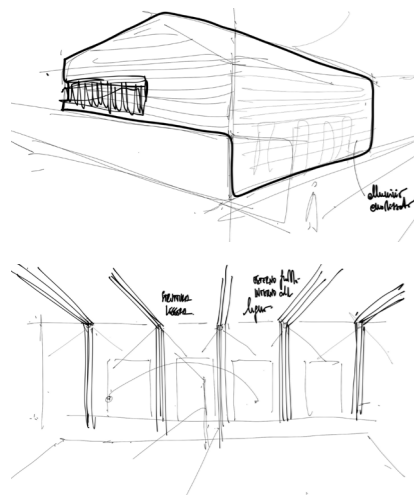
The project for the extension of the **Cova Adaglio Palace** follows a functional approach, where the design criteria derive from the **didactic and organisational requirements** of the school.

It stands in continuity to the existing historical building and is characterised by contemporary architectural and technological features.

The volume hosting the classrooms is built in **X-lam panels** and is equipped

with FV panels on the roofing that are needed to satisfy energy consumption needs.

The **gymnasium** is constructed in a wooden framework, completed with a metallic ventilated façade that provides high bioclimatic performance.



Location:
Casale Monferrato, Italy

Typology:
New construction (extension)

Year:
2019

Status:
Completed

Dimensions:
1.035 sqm

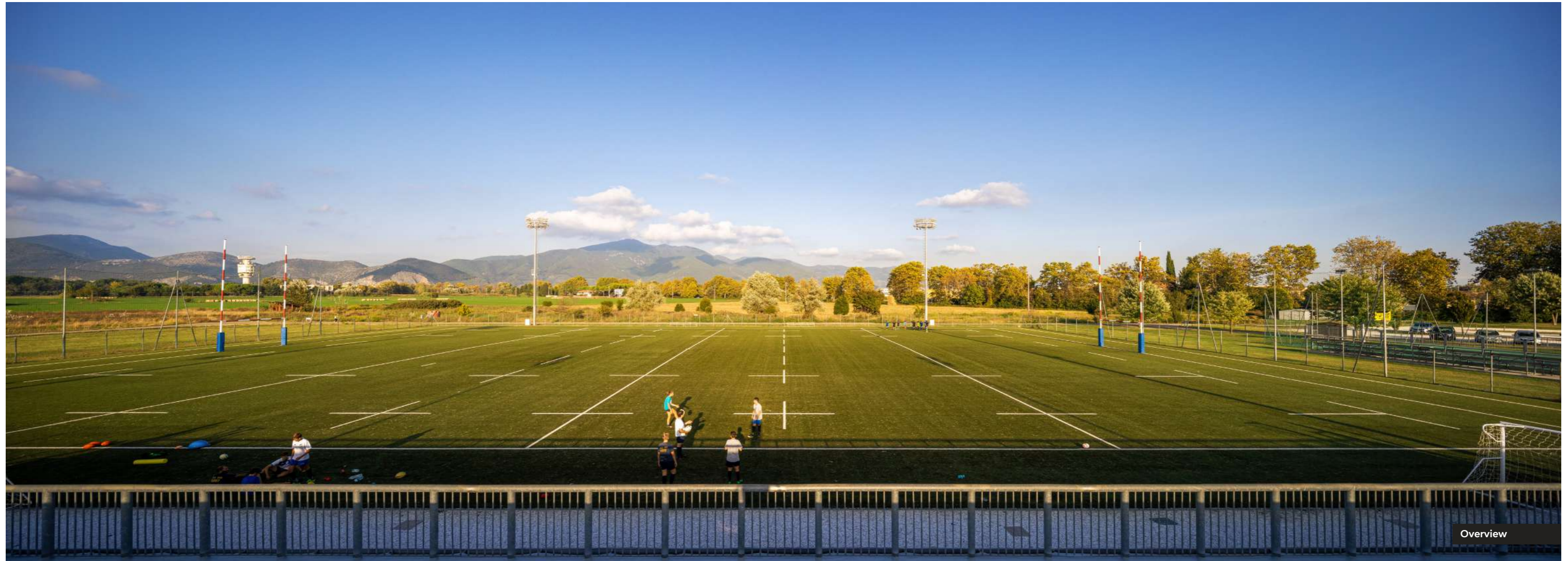
Budget:
€ 1.5 mln

Client:
Municipality of Casale Monferrato

Activities:
AR - ST - MEP design



Integration with the existing context



Overview

The intervention welcomes a rugby field, homologable for the C series, which combines technological parameters to expand the game experience.

SPORT

Rugby Arena

The heart of sport, a space for competition and team spirit

The project for the new rugby field for the CUS in Pisa completes the University Sports Centre in Via del Brennero.

A great deal of attention was paid to the technological design. Four light-towers brighten the game field.

The highly performing court surface is UV ray resistant and frost resistant.

The double coloured shades of the fibres give back a very resembling appearance to that of a real grass surface, improving the experience of playing.

Location:
Pisa, Italy

Typology:
New construction

Year:
2013

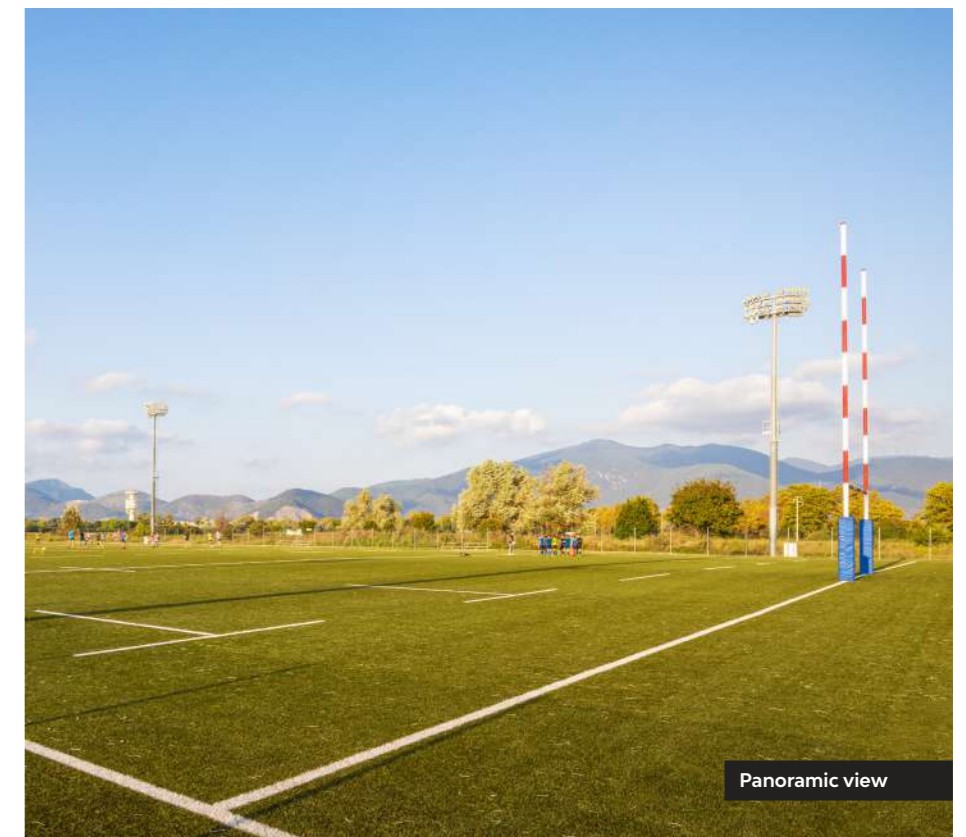
Status:
Completed

Dimensions:
110 X 70 m

Budget:
€ 565.000

Client:
CUS Pisa

Activities:
AR - ST - MEP design



Panoramic view



Project overview



Stadium interior

The sports character of the city interpreted as an urban revitalization and a model for development.

SPORT

Stadium Arena

Sport, territory, sustainability. The new Pisa stadium

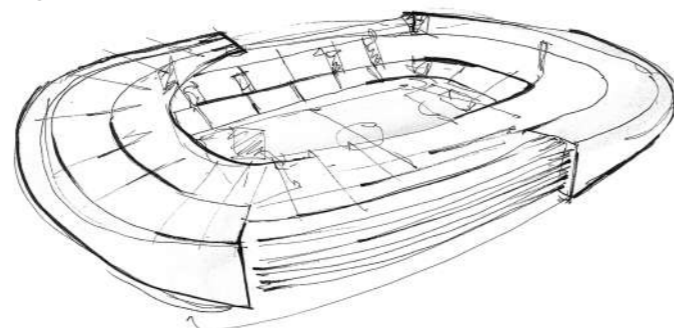
The aim of the project is to respond to the logistical-infrastructural needs that characterize the team, the fans and more generally, the entire city.

Two **sports courts**, a **hotel resort** for athletes, a **shopping area** and numerous **parking lots** make up the intervention program.

Large **green spaces** integrate the design into the surrounding context, allowing a strong **landscape**

continuity. The stadium is the fulcrum: a **double membrane** (blue in the north and red in the south) embraces the spectator tribunes.

The shape of the building is **optimized from a bioclimatic point of view**, a symbol of sustainability and community at the same time.



Location:
Pisa, Italy

Typology:
New construction

Year:
2010

Status:
Project completed

Dimensions:
20.000 Spectators

Budget:
€ 60 mln

Activities:
AR - ST - MEP design



Main entrance



Spectators area

Certifications

					
<p>BIM UNI PDR 74:2019 CERTIFIED COMPANY</p>	<p>ISO 9001:2015 CERTIFIED COMPANY</p>	<p>ISO 14001:2015 CERTIFIED COMPANY</p>	<p>ISO 45001:2018 CERTIFIED COMPANY</p>	<p>UNI PDR 125:2022 CERTIFIED COMPANY</p>	<p>SA 8000:2014 CERTIFIED COMPANY</p>

					
<p>ASSOCIATE OF CONFINDUSTRIA ASSOIMMOBILIARE</p>	<p>MEMBER OF OICE</p>	<p>MEMBER OF EFCA</p>	<p>MEMBER OF CNETO CENTRO NAZIONALE EDILIZIA E TECNICA OSPEDALIERA</p>	<p>MEMBER OF GREEN BUILDING COUNCIL ITALIA</p>	<p>LEGAMBIENTE IDENTITY CARD</p>

		
<p>BIM QUALITY ENVIRONMENT POLICY</p>	<p>SOCIAL RESPONSABILITY POLICY</p>	<p>GENDER EQUALITY POLICY</p>

ATI | Project

CREATING A BETTER REALITY

PISA
MILAN
BELGRADE
ODENSE
COPENHAGEN
PARIS
GENEVA
TALLINN